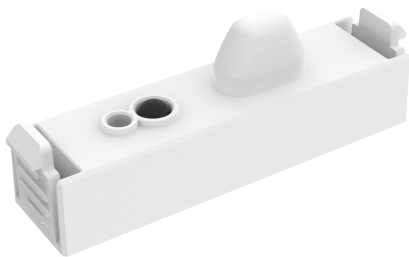


SOV-M/D SOV-M/D

## Sova Plug-in microwave motion and daylight sensor

- Optional corridor function
- PWM (5V DC) control output
- Powered by low voltage 12V DC
- Mounting height up to 6m
- Super compact design
- Sensor setting with DIP switch
- It can be configured with Uni-Remote
- Full sensor features available when using the RMT-UNI (Hold Time, Daylight Threshold, Stand-by Period, Stand-by Dim Level, Detection Area, Dim up, Dim down, Brightness)



### Overview

The Sova microwave sensor is a simple energy-saving solution that uses light only when and where you need it. The sensor has an adjustable sensitivity setting for use in that will detect motion and stay illuminated for the duration of the hold time after motion ends. The product also has a built-in light sensor.

### General Information

Installation Area Internal

### Technical Summary

Product Code	SOV-M/D
--------------	---------

Tel: 01635 523 713

Email: [sales@kosnic.com](mailto:sales@kosnic.com)

[Kosnic.com](http://Kosnic.com)



Kosnic Lighting KosnicUK KosnicLightingUK KosnicUK

SOV- SOV-M/D

## Accessories

Product Code	Description	Type
RMT-UNI	Universal Remote Control for Kosnic motion sensors	Remote Control

## Overview

The Sova microwave sensor is a simple energy-saving solution that uses light only when and where you need it. The sensor has an adjustable sensitivity setting for use in that will detect motion and stay illuminated for the duration of the hold time after motion ends. The product also has a built-in light sensor.



## General Information

Installation  
Area

Internal

Tel: 01635 523 713

Email: [sales@kosnic.com](mailto:sales@kosnic.com)

[Kosnic.com](http://Kosnic.com)

