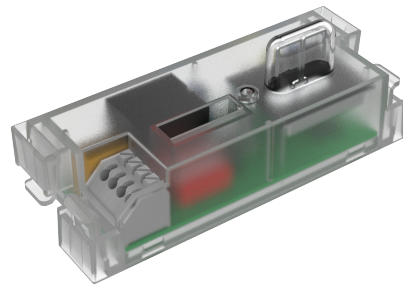


Plug-in Motion Sensor

RMW-AC RMW-AC

Compact Plug in microwave motion & daylight sensor

- Unique mechanical design allows for easy installation of the sensor
- Super compact design
- Mounting height up to 6m
- Sensor setting with DIP switch or remote control
- Modular design for Kosnic linear luminaires
- Compatible with the universal remote for additional settings
- New product code: HON-M



Overview

The Kosnic microwave motion and daylight sensor is a simple energy-saving solution that uses light only when and where you need it. The sensor has an adjustable sensitivity setting for use in that will detect motion and stay illuminated for the duration of the hold time after motion ends.



General Information

Installation Area Internal

Technical Summary

Product Code

RMW-AC

Tel: 01635 523 713

Email: sales@kosnic.com

Kosnic.com



Plug-in Motion Sensor

RMW- RMW-AC

Accessories

Product Code	Description	Type
RMT-UNI	Universal Remote Control for Kosnic motion sensors	Remote Control

Overview

The Kosnic microwave motion and daylight sensor is a simple energy-saving solution that uses light only when and where you need it. The sensor has an adjustable sensitivity setting for use in that will detect motion and stay illuminated for the duration of the hold time after motion ends.



General Information

Installation Area Internal

Tel: 01635 523 713

Email: sales@kosnic.com

Kosnic.com

