

**7** 7 Years  
Product Warranty  
UK Only

**2** 2 Years  
On-Site Warranty  
Main-land UK Only

# Nevis



NEV27-SCT    NEV27-SCT

## Nevis twin-strip CAT2 27W LED panel CCT switchable

- Switchable CCT (3000K/4000K/5000K)
- Supplied with flicker-free DC driver as standard
- Low glare UGR<16
- Optional DALI, 1-10V (0-10V) driver
- CAT 2 replacement

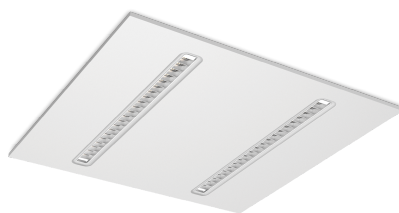


Figure 1

### Overview

The Nevis twin strip LED panel provides a unique appearance, with low glare and a flicker free driver as standard. CCT switching and can be fitted with a DALI and 0-10v driver. Designed for CAT 2 replacements, it fits the standard 600mm by 600mm ceiling grid but can also be suspended.



### General Information

Materials	Housing powder coated aluminium, Diffuser polycarbonate
Installation Area	Internal

### Technical Summary

Product Code

NEV27-SCT

Tel: 01635 523 713

Email: [sales@kosnic.com](mailto:sales@kosnic.com)

[Kosnic.com](http://Kosnic.com)



**7 Years**  
Product Warranty  
UK Only

**2 Years**  
On-Site Warranty  
Main-land UK Only

# Nevis



NEV27-NEV27-SCT

## Optional Gear

Product Code	Description	Type
EMPAD02	Niah, 2W universal emergency pad for LED panel	Emergency Module
UEM04	4W Universal Emergency Module Pro	Emergency Module
UEM03	3W Universal Emergency Module	Emergency Module
DRC30/DA	Dimmable Driver: 30W DALI, 1-10V, Primary PUSH Driver	Dimmable Driver
UEM04/DA	4W DALI Universal Emergency Module Pro	Emergency Module
DRC26/CSB	Dimmable Driver: Casambi dimmable driver 26W Bluetooth & PUSH button	Dimmable Driver
DRC40/DA	Dimmable Driver: 40W DALI2 1-10V primary push dim driver	Dimmable Driver
UEM03/SST	UEM 2 in 1 Standard&Self-test 3.5W Emergency Module	Emergency Module
UEM04/SST	4W Universal Emergency Module Pro 2 in 1 Standard/Self Test	Emergency Module
EMPAD02/SST	Niah 2 in 1 Standard & Self-test emergency kit for Panels	Emergency Kit
DRC40/D	Dimmable Driver 40W Phase-cut	

## Accessories

Product Code	Description	Type
SUS04	LED Panel & Slim Line 2 suspension kit (4 cables per bag)	Suspension Kit
SMT0606	Surface-mount frame for 600*600 panel, White	Mount Frame
SUS04/25	Suspension kit 2.5m Alden & Nevis & Slim Line 2 (4 cables per bag)	Suspension Kit
SRF0606	Skylight Recessed Frame 595x595mm	Mount Frame
SBX0606	Surface-mount frame Pre-build 595x595mm, White	Mount Frame

## Overview

The Nevis twin strip LED panel provides a unique appearance, with low glare and a flicker free driver as standard. CCT switching and can be fitted with a DALI and 0-10v driver. Designed for CAT 2 replacements, it fits the standard 600mm by 600mm ceiling grid but can also be suspended.



## General Information

Materials	Housing powder coated aluminium, Diffuser polycarbonate
Installation Area	Internal

Tel: 01635 523 713

Email: [sales@kosnic.com](mailto:sales@kosnic.com)

[Kosnic.com](http://Kosnic.com)



Kosnic Lighting KosnicUK KosnicLightingUK KosnicUK