

7 7 Years
Product Warranty
UK Only

2 2 Years
On-Site Warranty
Main-land UK Only

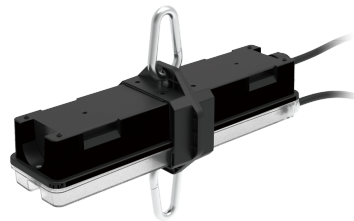


High Bay EME 2 in 1

EMHB05/SST EMHB05/SST

Emergency Module Duo 5W Manual&Self-test for Kosnic Highbays

- Select manual or self-test mode via the internal dual-mode DIP switch
- To adjust green LED indicator brightness, press and hold the test button for more than 3 seconds
- To set the duration test interval, press the button on the remote twice
- Automatic Self-test conforming to BS-EN-62034
- Wide voltage output range of 30-300V
- Easy installation with push-wire waterproof connector
- For maintained or non-maintained emergency lighting systems
- IP65



Overview

The emergency module is an optional extra for a selection of Kosnic LED High and Low Bay luminaires. This module will add a minimum 3hr duration emergency lighting option, giving you complete peace of mind in all your installations. Plus, with this module, you can switch between standard and self-test.



General Information

Installation Area Internal and External

Technical Summary

Product Code

EMHB05/SST

Tel: 01635 523 713

Email: sales@kosnic.com

Kosnic.com



Kosnic Lighting KosnicUK

KosnicLightingUK

7 7 Years
Product Warranty
UK Only

2 2 Years
On-Site Warranty
Main-land UK Only



High Bay EME 2 in 1

EMHB05/SST

Accessories

Product Code	Description	Type
BATS40LFP2	Battery LiFePO4, 4000mAh capacity, 6.4V Voltage	Battery

Overview

The emergency module is an optional extra for a selection of Kosnic LED High and Low Bay luminaires. This module will add a minimum 3hr duration emergency lighting option, giving you complete peace of mind in all your installations. Plus, with this module, you can switch between standard and self-test.



General Information

Installation Area
Internal and External

Tel: 01635 523 713

Email: sales@kosnic.com

Kosnic.com



Kosnic Lighting KosnicUK KosnicLightingUK KosnicUK