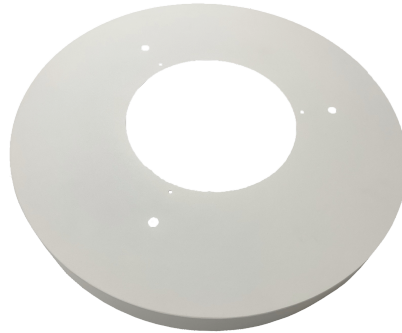


# Codale 2

COD-SMT COD-SMT

## Codale 2 Surface Mount

- White surface mount frame
- Compatible with Codale
- Quick and easy to install



Technical Summary	
Product Code	COD-SMT



### General Information

Materials	Housing anodized aluminium, Diffuser polycarbonate
Installation Area	Internal

Tel: 01635 523 713

Email: [sales@kosnic.com](mailto:sales@kosnic.com)

[Kosnic.com](http://Kosnic.com)



# Codale 2

COD- COD-SMT

## Optional Gear

Product Code	Description	Type
BEM203/ST	3W self-test UEM for linear LED luminaire	Self-test Emergency Module
BEM203	3W standard UEM for linear LED luminaire	Emergency Module
CYC030TDC30-90	30W DALI2 1-10V primary push dim driver (KL30C-PDiIV)	Dimmable Driver

## Overview

This white surface-mount frame is suitable for the Codale LED Circular Surface Luminaire.



## General Information

Materials	Housing anodized aluminium, Diffuser polycarbonate
Installation Area	Internal

Tel: 01635 523 713

Email: [sales@kosnic.com](mailto:sales@kosnic.com)

[Kosnic.com](http://Kosnic.com)

