

7 7 Years
Product Warranty
UK Only

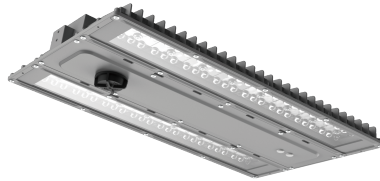
2 2 Years
On-Site Warranty
Main-land UK Only

Arcus Pro

ARCP200-W50 ARCP200-W50

Arcus Pro Low Bay 100W/150W/200W switchable 90°x 90° 5000K

- High efficiency up to 171lm/W
- Optional plug-in emergency modules, available in standard, self-test and DALI
- Switchable wattage
- DALI dimming alternative driver available
- IP65, vandal resistant IK09
- Conduit, trunking or surface-mounting
- BESA box fitting points
- High rack optics



Overview

The Arcus Pro adds wattage switching to the Arcus range, while keeping all the modularity. Along with the plug in sensors and multiple mounting options the Arcus Pro also has an option for DALI control. The Arcus Pro offers great energy saving and flexible modular design.



General Information

Installation Area Internal

Technical Summary

Product Code

ARCP200-W50

Tel: 01635 523 713

Email: sales@kosnic.com

Kosnic.com



Kosnic Lighting KosnicUK

KosnicLightingUK

7 7 Years
Product Warranty
UK Only

2 2 Years
On-Site Warranty
Main-land UK Only

Arcus Pro



ARCP200-~~ARC~~CP200-W50

Optional Gear

Product Code	Description	Type
CON-P	Condor PIR sensor with Zhaga Socket Small lens 10m detection range	PIR Sensor
CON-P/BLE	Condor Bluetooth PIR sensor Zhaga connector ON/OFF 0-10V Dimming	PIR Sensor
MWS-ZGA	Zhaga microwave motion sensor, 1-10V dim output	Microwave Sensor
CONP-P	Condor Pro PIR Sensor with Zhaga connector	PIR Sensor
EMLB05/SST	Low Bay 5W EME Duo Manual & Self-test emergency module	Emergency Module
EMLB05/DA	Low Bay 5W EME DALI-2 & Self test emergency module	Self-test Emergency Module

Accessories

Product Code	Description	Type
RMT-UNI	Universal Remote Control for Kosnic motion sensors	Remote Control

17100



Overview

The Arcus Pro adds wattage switching to the Arcus range, while keeping all the modularity. Along with the plug in sensors and multiple mounting options the Arcus Pro also has an option for DALI control. The Arcus Pro offers great energy saving and flexible modular design.

General Information

Installation Area Internal

Tel: 01635 523 713

Email: sales@kosnic.com

Kosnic.com



Kosnic Lighting KosnicUK KosnicLightingUK KosnicUK