

7 7 Years
Product Warranty
UK Only

2 2 Years
On-Site Warranty
Main-land UK Only

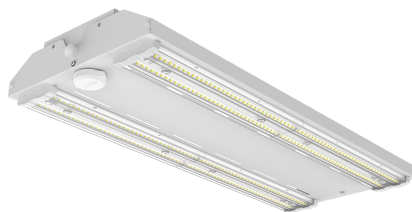


Arcus 3

ARC3200-WSCT ARC3200-WSCT

Arcus 2 lowbay 90°x110° 150/180/200W 4000/6500K switch Zhaga

- CCT switchable (4500K & 6500K)
- Plug in microwave motion & daylight sensor
- Wattage switching
- Plug-in emergency option
- Vandal resistant (IK10)
- Conduit, trunking or surface mounting
- BESA box fitting points



Overview

The Arcus 3 adds wattage and CCT switching to the Arcus range, while keeping all the modularity. Along with the plug in motion sensors and multiple mounting options the Arcus III also has an option for DALI control. The Arcus III offers great energy saving and flexible modular design.



General Information

Materials	Housing zinc coated sheet steel
Installation Area	Internal

Technical Summary

Product Code

ARC3200-WSCT

Tel: 01635 523 713

Email: sales@kosnic.com

Kosnic.com



Kosnic Lighting KosnicUK KosnicLightingUK KosnicUK

7 7 Years
Product Warranty
UK Only

2 2 Years
On-Site Warranty
Main-land UK Only

Arcus 3



ARC3200-WSCT

Optional Gear

Product Code	Description	Type
MWS-ZGA	Zhaga microwave motion sensor, 1-10V dim output	Microwave Sensor
BEM05/ST	5W Emergency module self-test push-in for linear LED luminaire	Self-test Emergency Module
BEM05	5W standard push-in EME module for linear LED luminaire	Emergency Module
MWS-DC	Plug-in microwave motion sensor 12V DC PWM	Microwave Sensor
PIR-ZGA	PIR sensor with Zhaga connector with ON/OFF 0-10V Dimming	PIR Sensor

Overview

The Arcus 3 adds wattage and CCT switching to the Arcus range, while keeping all the modularity. Along with the plug in motion sensors and multiple mounting options the Arcus III also has an option for DALI control. The Arcus III offers great energy saving and flexible modular design.



General Information

Materials	Housing zinc coated sheet steel
Installation Area	Internal

Tel: 01635 523 713

Email: sales@kosnic.com

Kosnic.com



Kosnic Lighting KosnicUK KosnicLightingUK KosnicUK