

7 7 Years
Product Warranty
UK Only

2 2 Years
On-Site Warranty
Main-land UK Only

Adda

Kosnic 

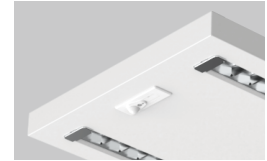
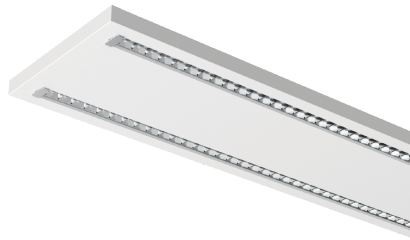
ADD5FT40-SCT- ADD5FT40-SCT-WHT/BLE

Adda 40W 5ft twin linear CCTswitch.white,Bluetooth PIR sensor

- High efficiency up to 145lm/W
- Switchable wattage and CCT (3000/4000/5000K)
- UGR<17
- Optional plug-in emergency modules, available in standard, self-test and DALI
- Optional built-in sensor and Bluetooth PIR versions available
- DALI 0-10V and PUSH dimming alternative driver available
- Slim profile design
- Available in white and black

Overview

The Kosnic Adda is our stylish modular louvre LED linear luminaire. With this batten, you have full customisability, choose from the options available for the switchable wattage and CCT, plus choose from the from the built-in sensor and Bluetooth versions. It is the perfect addition to any lighting scheme.



IP20



General Information

Ambient Temperature Range (°C)	-20°C to 50°C
IK Rating	IK02
IP Rating	IP20
Materials	Housing: Iron + ABS
Protection Rating	Class III
Installation Area	Internal
L80B10 Lifetime (h) @Ta 25 °C	110,000 h

Compliance

LVD	EN 60598-1:2024, EN 60598-2-1:2021, EN 62031:2020, EN 62493:2015+A1:2022
EMC	EN 55015:2019+A11:2020, EN 61000-3-2:2019+A1:2021, EN 61000-3-3:2013+A1:2019+A2:2021, EN 61547:2023
Others	UKCA, CE, RoHS, WEEE

Technical Summary

Product Code	ADD5FT40-SCT-WHT/BLE
Input Voltage Supply	220-240Vac 50/60Hz
Inrush Current (peak/duration) (A)	34 A / 220 µs
Default Power	40 W
Driver Code/Part number	DR55C105/DV (Kosnic)
Driver Maximum Power (W)	52.5 W
Driver Output Current (mA)	1050
Power Factor	0.95
Driver Power Factor	≥0.9
Settable Colour Temperatures	3000K, 4000K, 5000K
SDCM of CCT	<3
CRI	82
Dimmable	N
Flicker	<1%
Lumens Output Maximum	5,800 lm
Emergency Luminous Flux	300 lm
L70B50 Lifetime (h) @Ta 25 °C	174,000 h
L80B10 Lifetime (h) @Ta 25 °C	110,000 h
L90B10 Lifetime (h) @Ta 25 °C	53,000 h
Nominal Lifetime (h)	50,000 h
Glow wire temperature(°C)	650
Blue Light Hazard	RG1
Weight	3.85Kg
Dimensions (L x W x D) (mm)	1500x310x30
LS Energy Efficiency Class	D

Tel: 01635 523 713

Email: sales@kosnic.com

Kosnic.com



Kosnic Lighting KosnicUK

KosnicLightingUK

7 7 Years
Product Warranty
UK Only

2 2 Years
On-Site Warranty
Main-land UK Only

Adda

Kosnic 

ADD5FT40-D5FT40-SCT-WHT/BLE

Overview

The Kosnic Adda is our stylish modular louvre LED linear luminaire. With this batten, you have full customisability, choose from the options available for the switchable wattage and CCT, plus choose from the from the built-in sensor and Bluetooth versions. It is the perfect addition to any lighting scheme.



General Information

Ambient Temperature Range (°C)	-20°C to 50°C
IK Rating	IK02
IP Rating	IP20
Materials	Housing: Iron + ABS
Nominal Lifetime (h)	50,000 h
Protection Rating	Class III
Installation Area	Internal

Optional Gear

Product Code	Description	Type
DRC42/CSB	Dimmable Driver: Casambi dimmable driver 42W Bluetooth & PUSH button	Dimmable Driver
DRC40/DA	Dimmable Driver: 40W DALI2 1-10V primary push dim driver	Dimmable Driver
UEM03	Universal Emergency Module 3W	Emergency Module
UEM03/SST	Universal Emergency Module Duo 3.5W Standard&Self-test	Emergency Module
UEM04	Universal Emergency Module Pro 4W	Emergency Module
UEM04/SST	Universal Emergency Module Pro Duo 4W Standard/Self Test	Emergency Module
UEM04/DA	Universal Emergency Module Pro DALI 4W	Emergency Module

Accessories

Product Code	Description	Type
ADD-RMT	Adda Remote control for PIR sensor version	Remote Control
ADDT-SMT	Adda Ceiling surface-mount kit for 4Ft & 5ft twin batten	Suspension Kit
ADD-CLIP	Adda Interlock clips, including 2 pairs	Clips/Brackets
ADDT-BLANK-WHT	Adda Blank section, 310x310mm, white	Blank Section
ADD5FT-BLANK-WHT	Adda Blank section for 5ft twin batten, 310x1500mm, white	Blank Section
ADDDBL5FT	Adda Back light accessory for 5ft twin batten	Back Light Accessory

Rated Power (W)	CCT (K)	Lumen (lm)
40	3000 (Warm White)	5000
40	4000 (Cool White)	5600
40	5000 (Day Light)	5800

Tel: 01635 523 713

Email: sales@kosnic.com

Kosnic.com



Kosnic Lighting KosnicUK KosnicLightingUK KosnicUK

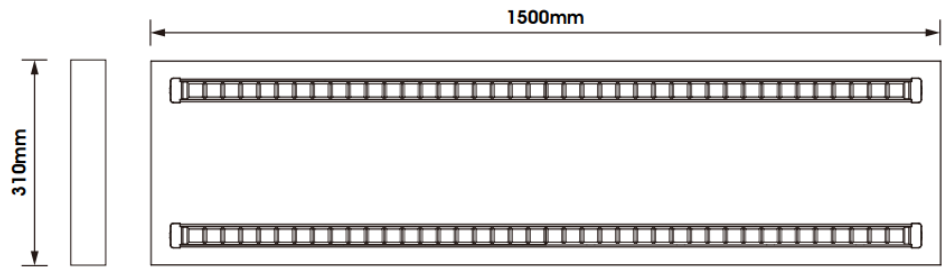
7 7 Years
Product Warranty
UK Only

2 2 Years
On-Site Warranty
Main-land UK Only

Adda

Kosnic 

ADD5FT40 ADD5FT40-SCT-WHT/BLE



ADD5FT

Overview

The Kosnic Adda is our stylish modular louvre LED linear luminaire.

With this batten, you have full customisability, choose from the options available for the switchable wattage and CCT, plus choose from the from the built-in sensor and Bluetooth versions. It is the perfect addition to any lighting scheme.



IP20



General Information

Ambient Temperature Range (°C)	-20°C to 50°C
IK Rating	IK02
IP Rating	IP20
Materials	Housing: Iron + ABS
Nominal Lifetime (h)	50,000 h
Protection Rating	Class III
Installation Area	Internal

Tel: 01635 523 713

Email: sales@kosnic.com

Kosnic.com



Kosnic Lighting KosnicUK KosnicLightingUK KosnicUK