

**7** 7 Years  
Product Warranty  
UK Only

**2** 2 Years  
On-Site Warranty  
Main-land UK Only

# Adda

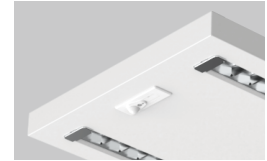
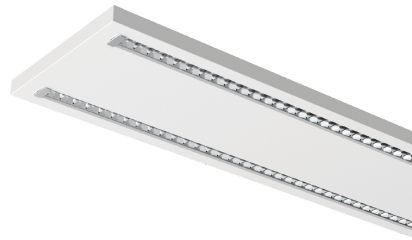
ADD4FT30-SCT- ADD4FT30-SCT-WHT/BLE

## Adda 30W 4ft twin linear CCTswitch.,white,Bluetooth PIR sensor

- High efficiency up to 145lm/W
- Switchable wattage and CCT (3000/4000/5000K)
- UGR<17
- Optional plug-in emergency modules, available in standard, self-test and DALI
- Optional built-in sensor and Bluetooth PIR versions available
- DALI 0-10V and PUSH dimming alternative driver available
- Slim profile design
- Available in white and black

### Overview

The Kosnic Adda is our stylish modular louvre LED linear luminaire. With this batten, you have full customisability, choose from the options available for the switchable wattage and CCT, plus choose from the from the built-in sensor and Bluetooth versions. It is the perfect addition to any lighting scheme.



### General Information

Ambient Temperature Range (°C)	-20°C to 50°C
IK Rating	IK02
IP Rating	IP20
Materials	Housing: Iron + ABS
Protection Rating	Class III
Installation Area	Internal
L80B10 Lifetime (h) @Ta 25 °C	110,000 h

### Compliance

LVD	EN 60598-1:2024, EN 60598-2-1:2021, EN 62031:2020, EN 62493:2015+A1:2022
EMC	EN 55015:2019+A11:2020, EN 61000-3-2:2019+A1:2021, EN 61000-3-3:2013+A1:2019+A2:2021, EN 61547:2023
Others	UKCA, CE, RoHS, WEEE

### Technical Summary

Product Code	ADD4FT30-SCT-WHT/BLE
Input Voltage Supply	220-240Vac 50/60Hz
Inrush Current (peak/duration) (A)	34 A / 220 µs
Default Power	30 W
Driver Code/Part number	DR42C80/DV (Kosnic)
Driver Maximum Power (W)	40 W
Driver Output Current (mA)	800
Power Factor	0.95
Driver Power Factor	≥0.9
Settable Colour Temperatures	3000K, 4000K, 5000K
SDCM of CCT	<3
CRI	82
Dimmable	N
Flicker	<1%
Lumens Output Maximum	4,050 lm
Emergency Luminous Flux	600 lm
L70B50 Lifetime (h) @Ta 25 °C	174,000 h
L80B10 Lifetime (h) @Ta 25 °C	110,000 h
L90B10 Lifetime (h) @Ta 25 °C	53,000 h
Nominal Lifetime (h)	50,000 h
Glow wire temperature(°C)	650
Blue Light Hazard	RG1
Weight	3.15Kg
Dimensions (L x W x D) (mm)	1200x310x30
LS Energy Efficiency Class	D

Tel: 01635 523 713

Email: sales@kosnic.com

Kosnic.com



Kosnic Lighting KosnicUK KosnicLightingUK

**7** Years  
Product Warranty  
UK Only

**2** Years  
On-Site Warranty  
Main-land UK Only

Adda

Kosnic 

ADD4FT30D4FT30-SCT-WHT/BLE

## Overview

The Kosnic Adda is our stylish modular louvre LED linear luminaire. With this batten, you have full customisability, choose from the options available for the switchable wattage and CCT, plus choose from the from the built-in sensor and Bluetooth versions. It is the perfect addition to any lighting scheme.



## General Information

Ambient Temperature Range (°C)	-20°C to 50°C
IK Rating	IK02
IP Rating	IP20
Materials	Housing: Iron + ABS
Nominal Lifetime (h)	50,000 h
Protection Rating	Class III
Installation Area	Internal

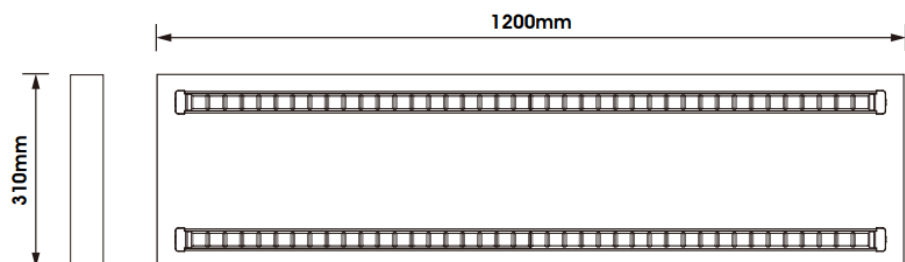
## Optional Gear

Product Code	Description	Type
DRC42/CSB	Dimmable Driver: Casambi dimmable driver 42W Bluetooth & PUSH button	Dimmable Driver
DRC30/DA	Dimmable Driver: 30W DALI, 1-10V, Primary PUSH Driver	Dimmable Driver
DRC40/DA	Dimmable Driver: 40W DALI2 1-10V primary push dim driver	Dimmable Driver
UEM03	Universal Emergency Module 3W	Emergency Module
UEM03/SST	Universal Emergency Module Duo 3.5W Standard&Self-test	Emergency Module
UEM04	Universal Emergency Module Pro 4W	Emergency Module
UEM04/SST	Universal Emergency Module Pro Duo 4W Standard/Self Test	Emergency Module
UEM04/DA	Universal Emergency Module Pro DALI 4W	Emergency Module

## Accessories

Product Code	Description	Type
ADD-RMT	Adda Remote control for PIR sensor version	Remote Control
ADDT-SMT	Adda Ceiling surface-mount kit for 4Ft & 5ft twin batten	Suspension Kit
ADD-CLIP	Adda Interlock clips, including 2 pairs	Clips/Brackets
ADDT-BLANK-WHT	Adda Blank section, 310x310mm, white	Blank Section
ADD4FT-BLANK-WHT	Adda Blank section for 4ft twin batten, 310x1200mm, white	Blank Section
ADD4FT	Adda Back light accessory for 4ft twin batten	Back Light Accessory

Rated Power (W)	CCT (K)	Lumen (lm)
30	3000 (Warm White)	3450
30	4000 (Cool White)	3900
30	5000 (Day Light)	4050



ADD4FT

Tel: 01635 523 713

Email: sales@kosnic.com

Kosnic.com



Kosnic Lighting KosnicUK KosnicLightingUK KosnicUK