

**7** 7 Years  
Product Warranty  
UK Only

**2** 2 Years  
On-Site Warranty  
Main-land UK Only



# Arcus 4

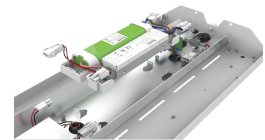
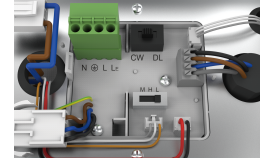
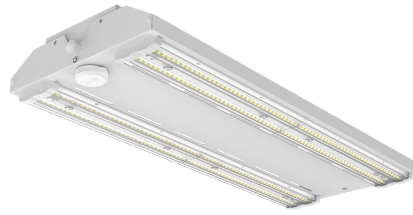
08994      ARC4150-PSCT/DA

## Arcus 4 lowbay polarized 40° 100/120/150W 4500/6500K DALI

- High efficiency up to 143lm/W
- Optional plug-in emergency modules, available in manual, self-test and DALI
- Switching wattage and CCT (4500/6500K)
- Optional plug-in microwave corridor sensor compatible with Uni-Remote
- Vandal resistant (IK10)
- Conduit, trunking or surface mounting
- BESA box fitting points

### Overview

The Arcus 4 adds wattage and CCT switching to the Arcus range, while keeping all the modularity. Along with the plug in motion sensors and multiple mounting options the Arcus 4 also has an option for DALI control. The Arcus 4 offers great energy saving and flexible modular design.



**IP20**



### General Information

Ambient Temperature Range (°C)	-20°C to 50°C
IK Rating	IK10
IP Rating	IP20
Protection Rating	Class I
Installation Area	Internal
L80B10 Lifetime (h) @Ta 25 °C	61,000 h

### Compliance

LVD	EN 60598-1:2024, EN 60598-2-1:2021, EN 62031:2020, EN 62493:2015+A1:2022
EMC	EN 55015:2019+A11:2020, EN 61000-3-2:2019+A1:2021, EN 61000-3-3:2013+A1:2019+A2:2021, EN 61547:2023
Others	UKCA, CE, RoHS, WEEE

### Technical Summary

Product Code	ARC4150-PSCT/DA
Input Voltage Supply	220-240Vac 50/60Hz
Inrush Current (peak/duration) (A)	90A /150 us
Settable Wattages	100W, 120W, 150W
Driver Code/Part number	SS-150NH-V300BHB (SOSEN)
Driver Maximum Power (W)	150
Driver Output Current (mA)	190-750
Driver Power Factor	>0.9
Settable Colour Temperatures	4500K, 6500K
SDCM of CCT	<6
CRI	82
Dimmable	Y
Flicker	<1%
Lumens Output Maximum	21,500 lm
Maximum Efficiency	143 lm/W
Emergency Luminous Flux	520 lm
L70B50 Lifetime (h) @Ta 25 °C	97,000 h
L80B10 Lifetime (h) @Ta 25 °C	61,000 h
L90B10 Lifetime (h) @Ta 25 °C	39,000 h
Nominal Lifetime (h)	50,000 h
Glow wire temperature(°C)	650
Blue Light Hazard	RG1
Weight	3.6Kg
Dimensions (L x W x D) (mm)	616x245x80
BESA Entry	True
Conduit Entry 20mm	Yes
Beam Angle - Lumi (°)	40
LS Energy Efficiency Class	D

Tel: 01635 523 713

Email: sales@kosnic.com

Kosnic.com



Kosnic Lighting   KosnicUK   KosnicLightingUK

**7** 7 Years  
Product Warranty  
UK Only

**2** 2 Years  
On-Site Warranty  
Main-land UK Only

# Arcus 4



08994 ARC4150-PSCT/DA

## Optional Gear

Product Code	Description	Type
BEM05/ST	Emergency module 5W Self-test push-in for Kosnic Lowbays	Self-test Emergency Module
BEM05	Emergency module 5W standard push-in for Kosnic Lowbays	Emergency Module

## Accessories

Product Code	Description	Type
ARC4-SUS-CLIP	Suspension Clip for Arcus 4	Clips/Brackets

Rated Power (W)	CCT (K)	Maximum Current Draw (mA)	Total Luminous Flux (lm)	Power Factor
100	4500	463	14300	0.94
100	6500	463	14300	0.94
120	4500	549	17200	0.95
120	6500	549	17200	0.95
150	4500	686	21500	0.95
<b>150</b>	<b>6500</b>	<b>686</b>	<b>21500</b>	<b>0.95</b>

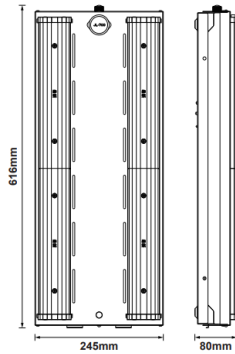
## Overview

The Arcus 4 adds wattage and CCT switching to the Arcus range, while keeping all the modularity. Along with the plug in motion sensors and multiple mounting options the Arcus 4 also has an option for DALI control. The Arcus 4 offers great energy saving and flexible modular design.



## General Information

Ambient Temperature Range (°C)	-20°C to 50°C
IK Rating	IK10
IP Rating	IP20
Nominal Lifetime (h)	50,000 h
Protection Rating	Class I
Installation Area	Internal



Tel: 01635 523 713

Email: sales@kosnic.com

Kosnic.com



Kosnic Lighting KosnicUK KosnicLightingUK KosnicUK

**7** 7 Years  
Product Warranty  
UK Only

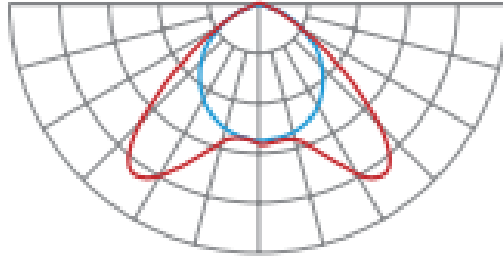
**2** 2 Years  
On-Site Warranty  
Main-land UK Only

# Arcus 4



08994 ARC4150-PSCT/DA

Polarized 40° (150W)



## Overview

The Arcus 4 adds wattage and CCT switching to the Arcus range, while keeping all the modularity. Along with the plug in motion sensors and multiple mounting options the Arcus 4 also has an option for DALI control. The Arcus 4 offers great energy saving and flexible modular design.



**IP20**



## General Information

Ambient Temperature Range (°C)	-20°C to 50°C
IK Rating	IK10
IP Rating	IP20
Nominal Lifetime (h)	50,000 h
Protection Rating	Class I
Installation Area	Internal

Tel: 01635 523 713

Email: [sales@kosnic.com](mailto:sales@kosnic.com)

[Kosnic.com](http://Kosnic.com)

