

7 7 Years
Product Warranty
UK Only

2 2 Years
On-Site Warranty
Main-land UK Only

Kosnic 

Arcus 4

08991 ARC4150-WSCT

Arcus 4 lowbay 90°x110° 100/120/150W 4500/6500K

- High efficiency up to 143lm/W
- Optional plug-in emergency modules, available in manual, self-test and DALI
- Switchable wattage and CCT (4500/6500K)
- Optional plug in microwave corridor sensor compatible with Uni-Remote
- DALI dimming alternative driver available
- Vandal resistant (IK10)
- Conduit, trunking or surface mounting
- BESA box fitting points

Overview

The Arcus 4 adds wattage and CCT switching to the Arcus range, while keeping all the modularity. Along with the plug in motion sensors and multiple mounting options the Arcus 4 also has an option for DALI control. The Arcus 4 offers great energy saving and flexible modular design.



IP20

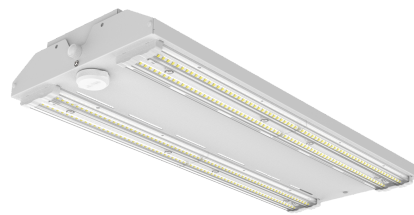


General Information

Ambient Temperature Range (°C)	-20°C to 50°C
IK Rating	IK10
IP Rating	IP20
Protection Rating	Class I
Installation Area	Internal
L80B10 Lifetime (h) @Ta 25 °C	61,000 h

Compliance

LVD	EN 60598-1:2024, EN 60598-2-1:2021, EN 62031:2020, EN 62493:2015+A1:2022
EMC	EN 55015:2019+A11:2020, EN 61000-3-2:2019+A1:2021, EN 61000-3-3:2013+A1:2019+A2:2021, EN 61547:2023
Others	UKCA, CE, RoHS, WEEE



Technical Summary

Product Code	ARC4150-WSCT
Input Voltage Supply	220-240Vac 50/60Hz
Inrush Current (peak/duration) (A)	90A /150 us
Settable Wattages	100W, 120W, 150W
Driver Code/Part number	SS-150NH-V300BHB (SOSEN)
Driver Maximum Power (W)	150
Driver Output Current (mA)	190-750
Driver Power Factor	>0.9
Settable Colour Temperatures	4500K, 6500K
SDCM of CCT	<6
CRI	82
Dimmable	N
Flicker	<1%
Lumens Output Maximum	21,500 lm
Maximum Efficiency	143 lm/W
Emergency Luminous Flux	520 lm
L70B50 Lifetime (h) @Ta 25 °C	97,000 h
L80B10 Lifetime (h) @Ta 25 °C	61,000 h
L90B10 Lifetime (h) @Ta 25 °C	39,000 h
Nominal Lifetime (h)	50,000 h
Glow wire temperature(°C)	650
Blue Light Hazard	RG1
Weight	3.6Kg
Dimensions (L x W x D) (mm)	616x245x80
BESA Entry	True
Conduit Entry 20mm	Yes
Beam Angle - Lumi (°)	90x110
LS Energy Efficiency Class	D

Tel: 01635 523 713

Email: sales@kosnic.com

Kosnic.com



Kosnic Lighting KosnicUK

KosnicLightingUK

7 Years
Product Warranty
UK Only

2 Years
On-Site Warranty
Main-land UK Only

Arcus 4



08991 ARC4150-WSCT

Overview

The Arcus 4 adds wattage and CCT switching to the Arcus range, while keeping all the modularity. Along with the plug in motion sensors and multiple mounting options the Arcus 4 also has an option for DALI control. The Arcus 4 offers great energy saving and flexible modular design.



IP20



General Information

Ambient Temperature Range (°C)	-20°C to 50°C
IK Rating	IK10
IP Rating	IP20
Nominal Lifetime (h)	50,000 h
Protection Rating	Class I
Installation Area	Internal

Optional Gear

Product Code	Description	Type
BEM05/SST	Emergency module Duo 5W Manual&Self-test for Kosnic Lowbays	Emergency Module
BEM05/DA	Emergency module 5W DALI-2&Self test for Kosnic Lowbays	Emergency Module
BATS20LFP4	Battery LiFePO4 6.4V Voltage 4000mAh Capacity	Battery
MWS-SID	M30 Side-mount microwave motion ON/OFF sensor	Microwave Sensor
MWS-ZGA	Zhaga microwave motion sensor, 1-10V dim output	Microwave Sensor
MWS-RMT	Infrared remote control for microwave sensor, MH10 (for MWS-ZGA)	Remote Control
CONP-P	Condor Pro PIR Sensor with Zhaga connector	PIR Sensor
CON-P	Condor PIR sensor with Zhaga Socket Small lens 10m detection range	PIR Sensor
RMT-UNI	Universal Remote Control for Kosnic motion sensors	Remote Control
CON-P/BLE	Condor Bluetooth PIR sensor Zhaga connector ON/OFF 0-10V Dimming	PIR Sensor

Accessories

Product Code	Description	Type
ARC4-SUS-CLIP	Suspension Clip for Arcus 4	Clips/Brackets

Rated Power (W)	CCT (K)	Maximum Current Draw (mA)	Total Luminous Flux (lm)	Power Factor
100	4500	463	14300	0.94
100	6500	463	14300	0.94
120	4500	549	17200	0.95
120	6500	549	17200	0.95
150	4500	686	21500	0.95
150	6500	686	21500	0.95

Tel: 01635 523 713

Email: sales@kosnic.com

Kosnic.com



Kosnic Lighting KosnicUK KosnicLightingUK KosnicUK

7 7 Years
Product Warranty
UK Only

2 2 Years
On-Site Warranty
Main-land UK Only

Arcus 4



08991 ARC4150-WSCT



Overview

The Arcus 4 adds wattage and CCT switching to the Arcus range, while keeping all the modularity. Along with the plug in motion sensors and multiple mounting options the Arcus 4 also has an option for DALI control. The Arcus 4 offers great energy saving and flexible modular design.



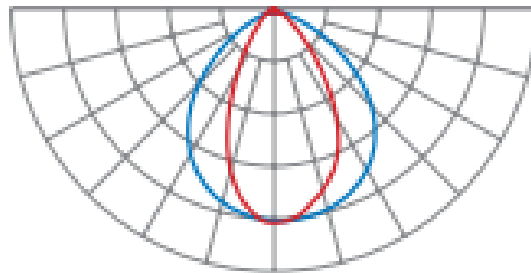
IP20



General Information

Ambient Temperature Range (°C)	-20°C to 50°C
IK Rating	IK10
IP Rating	IP20
Nominal Lifetime (h)	50,000 h
Protection Rating	Class I
Installation Area	Internal

90° x 110° (100W, 150W, 200W)



Tel: 01635 523 713

Email: sales@kosnic.com

Kosnic.com

