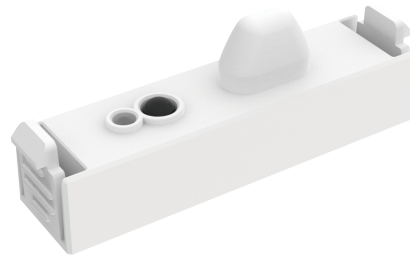


08979 SOV-M/D

Sova Plug-in microwave motion and daylight sensor

- Optional corridor function
- PWM (5V DC) control output
- Powered by low voltage 12V DC
- Mounting height up to 6m
- Super compact design
- Sensor setting with DIP switch
- It can be configured with Uni-Remote
- Full sensor features available when using the RMT-UNI (Hold Time, Daylight Threshold, Stand-by Period, Stand-by Dim Level, Detection Area, Dim up, Dim down, Brightness)
- Daylight harvesting available



Overview

The Sova microwave sensor is a simple energy-saving solution that uses light only when and where you need it. The sensor has an adjustable sensitivity setting for use in that will detect motion and stay illuminated for the duration of the hold time after motion ends. The product also has a built-in light sensor.



General Information

Ambient Temperature Range (°C)	-25°C to 60°C
IP Rating	IP20
Protection Rating	Class II
Installation Area	Internal

Technical Summary

Product Code	SOV-M/D
Input Voltage Supply	220-240Vac 50/60Hz
Weight	0.01Kg
Dimensions (L x W x D) (mm)	64x16x25

Compliance

Others	UKCA, CE, RoHS, WEEE
--------	----------------------

Tel: 01635 523 713

Email: sales@kosnic.com

Kosnic.com



08979 SOV-M/D

Overview

The Sova microwave sensor is a simple energy-saving solution that uses light only when and where you need it. The sensor has an adjustable sensitivity setting for use in that will detect motion and stay illuminated for the duration of the hold time after motion ends. The product also has a built-in light sensor.

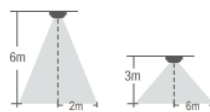


General Information

Ambient Temperature Range (°C)	-25°C to 60°C
IP Rating	IP20
Protection Rating	Class II
Installation Area	Internal



Detection Range



Detection area	Detection radius Walking speed: 1m/s	
	H: 6m	H: 3m
100%	2m	6m
75%	-	4.5m
50%	-	3m
25%	-	1m

ON	1	
I	-	100%
II	ON	50%

Detection area

Detection area can be reduced by selecting the combination on the DIP switches to fit precisely each application.

ON	2	3
I	-	5s
II	ON	1min
III	-	5min
IV	ON	30min

Hold time

Refers to the time period the lamp remains at 100% illumination after no motion detected.

ON	4	
I	-	Disable
II	ON	30Lux

Daylight Sensor

The sensor can be set to prevent illumination when the ambient light is above the daylight threshold. When set to disabled, the sensor will switch the light on when presence is detected regardless of the ambient light level.

ON	5	
I	-	0
II	ON	20%

Stand-by Dim Level

This is the lighting level for the Stand-by Period.

ON	6	
I	-	+∞
II	ON	15min

Stand-by Period

This is the period which the light source will remain illuminated at the Stand-by Dim Level once presence has ended.

A1 - A2 Hold Time [MIN]	A3 - A4 Daylight Threshold [LUX]	A5 - A6 Stand-By Period [MIN]	A7 - A8 Stand-By Dim Level [%]	B1 - B2 Detection Area [%]	B3 - B4 CCT [K]	B5 - B6 Brightness [%]	B7 User Key	B8 Pair Key
Time stays ON after no motion detected	OFF when ambient light above threshold	Remains dimmed for this period if no motion detected & then turns off	Dimmed level in Stand-By	Sensor detection area/sensitivity	Correlated colour Temperature	Adjust luminaire brightness	SECURITY SETTINGS	

Tel: 01635 523 713

Email: sales@kosnic.com

Kosnic.com

