

5 5 Years
Product Warranty
UK Only

2 2 Years
On-Site Warranty
Main-land UK Only



Low Bay EME DALI

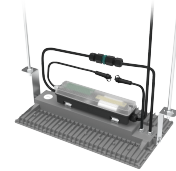
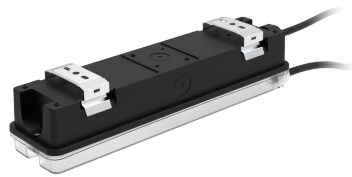
08969 EMLB05/DA

Low Bay 5W EME DALI-2 & Self test emergency module

- Wide voltage output range of 30-300V
- For maintained or non-maintained emergency lighting systems
- Easy installation with push-wire waterproof connector
- IP65
- DALI-2 conforming to EN 62386-202

Overview

The emergency module is an optional extra for a selection of Kosnic LED High and Low Bay luminaires. This module will add a minimum 3hr duration emergency lighting option, giving you complete peace of mind in all your installations.



General Information

| | |
|--------------------|-----------------------|
| IP Rating | IP65 |
| Installation Area | Internal and External |
| UEM/EME Protection | Class II |

Technical Summary

| | |
|-------------------------------------|--------------------|
| Product Code | EMLB05/DA |
| UEM/EME Input Voltage | 220-240Vac 50/60Hz |
| UEM/EME Ambient Temperature Range | 0°C to 50°C |
| UEM/EME Protection | Class II |
| UEM/EME Dimensions (L x W x D) (mm) | 293x62 |

Compliance

| | |
|--------|-----------------------------|
| Others | UKCA, CE, RoHS, WEEE, REACH |
|--------|-----------------------------|

Tel: 01635 523 713

Email: sales@kosnic.com

Kosnic.com



Kosnic Lighting KosnicUK KosnicLightingUK

5 5 Years
Product Warranty
UK Only

2 2 Years
On-Site Warranty
Main-land UK Only

Low Bay EME DALI

08969 EMLB05/DA

Accessories

| Product Code | Description | Type |
|--------------|-------------------------------------------------|---------|
| BATS40LFP2 | Battery LiFePO4, 4000mAh capacity, 6.4V Voltage | Battery |

Overview

The emergency module is an optional extra for a selection of Kosnic LED High and Low Bay luminaires. This module will add a minimum 3hr duration emergency lighting option, giving you complete peace of mind in all your installations.



General Information

| | |
|--------------------|-----------------------|
| IP Rating | IP65 |
| Installation Area | Internal and External |
| UEM/EME Protection | Class II |

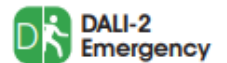


LED Indicator

| | | |
|---------|--------|-------------------------|
| ● | — | System Healthy |
| * — | 1/2 s | Duration Test Pending |
| * - - - | 1/4 s | Duration Test Running |
| * - - - | 1/8 s | Functional Test Running |
| * - - - | 1/10 s | Inhibit Mode Activated |

| | | |
|---------|-------|-------------------------|
| ● | — | Battery Charging Fault |
| * - - - | 1/4 s | Battery Duration Fault |
| * - - - | 1/8 s | Lamp or Luminaire Fault |

● Continuous On — On
* Flash - - - Off



Tel: 01635 523 713

Email: sales@kosnic.com

Kosnic.com

