

7 7 Years
Product Warranty
UK Only

2 2 Years
On-Site Warranty
Main-land UK Only

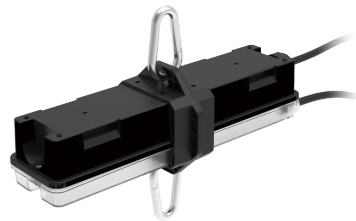


High Bay EME 2 in 1

08968 EMHB05/SST

Emergency Module Duo 5W Manual&Self-test for Kosnic Highbays

- Select manual or self-test mode via the internal dual-mode DIP switch
- To adjust green LED indicator brightness, press and hold the test button for more than 3 seconds
- To set the duration test interval, press the button on the remote twice
- Automatic Self-test conforming to BS-EN-62034
- Wide voltage output range of 30-300V
- Easy installation with push-wire waterproof connector
- For maintained or non-maintained emergency lighting systems
- IP65



Overview

The emergency module is an optional extra for a selection of Kosnic LED High and Low Bay luminaires. This module will add a minimum 3hr duration emergency lighting option, giving you complete peace of mind in all your installations. Plus, with this module, you can switch between standard and self-test.



IP65



General Information

| | |
|--------------------|-----------------------|
| IP Rating | IP65 |
| Installation Area | Internal and External |
| UEM/EME Protection | Class II |

Technical Summary

| | |
|-------------------------------------|--------------------|
| Product Code | EMHB05/SST |
| Emergency Luminous Flux | 650 lm |
| UEM/EME Battery Life | 4 |
| UEM/EME Input Voltage | 220-240Vac 50/60Hz |
| UEM/EME Ambient Temperature Range | 0°C to 50°C |
| UEM/EME Protection | Class II |
| UEM/EME Weight | 1.6 |
| UEM/EME Dimensions (L x W x D) (mm) | 293x62 |

Compliance

| | |
|--------|-----------------------------|
| Others | UKCA, CE, RoHS, WEEE, REACH |
|--------|-----------------------------|

Tel: 01635 523 713

Email: sales@kosnic.com

Kosnic.com



Kosnic Lighting KosnicUK

KosnicLightingUK

7 7 Years
Product Warranty
UK Only

2 2 Years
On-Site Warranty
Main-land UK Only

High Bay EME 2 in 1

08968 EMHB05/SST

Accessories

| Product Code | Description | Type |
|--------------|---|---------|
| BATS40LFP2 | Battery LiFePO4, 4000mAh capacity, 6.4V Voltage | Battery |

Overview

The emergency module is an optional extra for a selection of Kosnic LED High and Low Bay luminaires. This module will add a minimum 3hr duration emergency lighting option, giving you complete peace of mind in all your installations. Plus, with this module, you can switch between standard and self-test.



General Information

| | |
|--------------------|-----------------------|
| IP Rating | IP65 |
| Installation Area | Internal and External |
| UEM/EME Protection | Class II |



Healthy Statuses:

- — System Healthy
- * - - - 1/2 s — Duration Test Pending
- * - - - 1/4 s — Duration Test Running
- * - - - 1/8 s — Functional Test Running

Symbols explained:

- ● Continuous On
- * * Flash
- - - On
- Off

Faults & Warning:

- — Battery Charging Fault / Not Connected
- * - - - 1/4 s — Battery Duration Fault
- * - - - 1/8 s — Lamp or Luminaire Fault
- * * — 5 s — 1 s — Installation Fault Warning

Tel: 01635 523 713

Email: sales@kosnic.com

Kosnic.com

