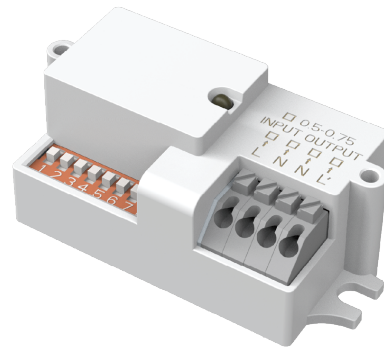


# Microwave Sensor On/Off

08912 POL2-MWS

## Plug-in ON/OFF Microwave Sensor for POL215 & OSS318-SCT

- Automatic switching based on motion and ambient light setting
- Compact design
- Settings adjustable via DIP switches
- Push-fit input and output wire terminals (0.5-0.75mm<sup>2</sup>)
- Class II, IP20



### Overview

Plug-in microwave sensor for a wide range of surface luminaires. A simple energy-saving solution that uses light only when and where you need it.



**IP20**

### General Information

Ambient Temperature Range (°C)	-25 C to 60 C (Storage: -40 C to 80 C)
IP Rating	IP20
Protection Rating	Class II

### Compliance

LVD	EN 61058-1:2018
EMC	EN 61326-1:2013
Others	UKCA, CE, RoHS, WEEE

### Technical Summary

Product Code	POL2-MWS
Weight	0.025Kg

Tel: 01635 523 713

Email: [sales@kosnic.com](mailto:sales@kosnic.com)

[Kosnic.com](http://Kosnic.com)



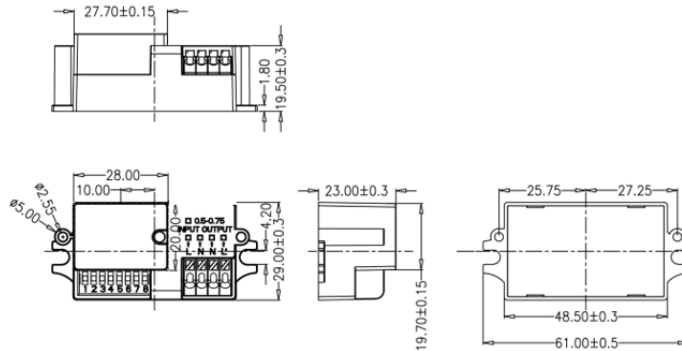
Kosnic Lighting KosnicUK KosnicLightingUK

# Microwave Sensor On/Off

08912 POL2-MWS

## Overview

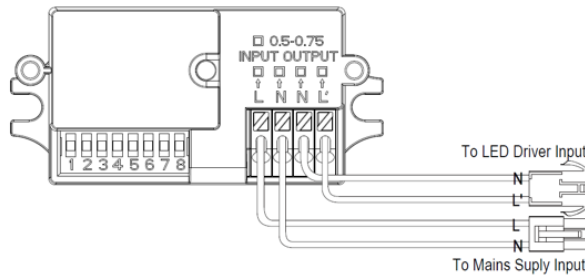
Plug-in microwave sensor for a wide range of surface luminaires. A simple energy-saving solution that uses light only when and where you need it.



## General Information

Ambient Temperature Range (°C)	-25 C to 60 C (Storage: -40 C to 80 C)
IP Rating	IP20
Protection Rating	Class II

## Wiring



The sensor is allowed to be connected to one load only. The sensor may be damaged if connecting more than one load.

## DIP Switch Setting

Detection Area				Hold Time				Ambient Light Level			
	1	2		3	4	5		6	7	8	
I	ON	ON	100%	I	ON	ON	5S	I	ON	ON	2Lux
II	ON	-	75%	II	ON	ON	30S	II	ON	ON	10Lux
III	-	ON	50%	III	ON	-	1min	III	-	ON	25Lux
IV	-	-	25%	IV	ON	-	3min	IV	ON	-	50Lux
				V	-	ON	5min	V	-	-	Disable*
				VI	-	ON	10min				
				VII	-	-	20min				
				VIII	-	-	30min				

\*Setting "Disable", sensor will switch luminaire on/off when regardless of ambient light levels.

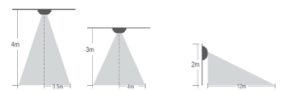
\*Daylight thresholds are typical values that are measured on a sunny day without shadow and with diffuse ambient light reflection.

\*Factory Settings: Detection Area: 75%, Hold Time: 30S, Daylight Sensor: Disable

## Override Function

Light will constantly remain on after continuously turning on and off light five times in two second. Recover sensing function when power on again.

## Detection Range



Mounting height Detection Area	4m		3m		Mounting height Detection Area	2m			
	100%	75%	50%	25%		100%	75%	50%	25%
4m	3.5m	4m			2m	12m	10m	9m	6m
3m			2.5m						
				2m					
				1m					

Tel: 01635 523 713

Email: sales@kosnic.com

Kosnic.com

