

7 7 Years
Product Warranty
UK Only

2 2 Years
On-Site Warranty
Main-land UK Only

Doxa 2



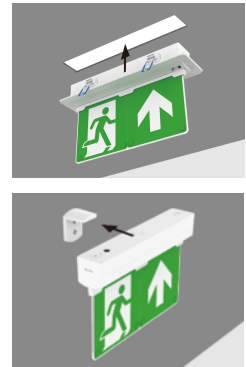
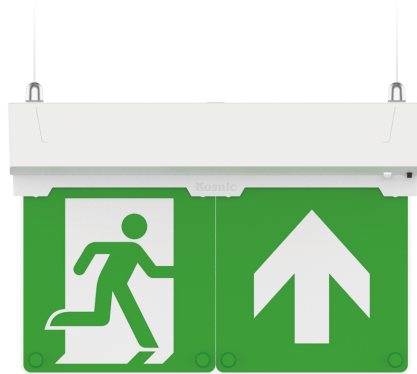
08863 DOX20103/SST

Doxa 2 Duo Emergency exit sign Manual & Self-test

- Select manual or self-test mode via the internal dual-mode DIP switch
- Automatic Self-test conforming to BS-EN-62034
- To adjust green LED indicator brightness, press and hold the test button for more than 2 seconds
- 7 mounting positions
- Integrated mounting clips
- Maintained or non-maintained operation

Overview

The Kosnic Doxa emergency exit sign is a self-contained, multi-purpose, maintained or non-maintained 3-hour emergency exit sign solution. The fitting is adaptable to be surface mounted in multiple positions. Also, available in self-test version.



General Information

IP Rating	IP20
Installation Area	Internal
UEM/EME Protection	Class II
L80B10 Lifetime (h) @Ta 25 °C	109,000 h

Compliance

LVD	EN 60598-1:2024, EN 60598-2-22:2022, EN 61347-2-7:2012+A1:2021, EN 61347-2-13:2014+A1:2017, EN 62031:2020, EN 62493:2015+A1:2022
EMC	EN 55015:2019+A11:2020, EN 61000-3-2:2019+A1:2021, EN 61000-3-3:2013+A1:2019+A2:2021, EN 61547:2023
Others	UKCA, CE, RoHS, WEEE, REACH

Technical Summary

Product Code	DOX20103/SST
Lumens Output Maximum	30 lm
Emergency Luminous Flux	30 lm
Maintained Luminous Flux	50 lm
L80B10 Lifetime (h) @Ta 25 °C	109,000 h
UEM/EME Battery Life	5 y
UEM/EME Input Voltage	220-240Vac 50/60Hz
UEM/EME Ambient Temperature Range	0°C to 50°C
UEM/EME Power Factor	0.5
UEM/EME CCT	6,500 K
UEM/EME Input Power (Max)	3 W
UEM/EME Protection	Class II
UEM/EME Weight	0.735 kg
UEM/EME Dimensions (L x W x D) (mm)	172.5x264x45
UEM/EME Emergency Operation Test	Dual-mode Standard & Self-Test (ATS Type S)

Tel: 01635 523 713

Email: sales@kosnic.com

Kosnic.com



Kosnic Lighting KosnicUK KosnicLightingUK

7 7 Years
Product Warranty
UK Only

2 2 Years
On-Site Warranty
Main-land UK Only

Doxa 2



08863 DOX20103/SST

Accessories

Product Code	Description
BATS18LFP1	Battery for DD EME 2, Doxa 2 & EME light 2 in 1, Temp sensor

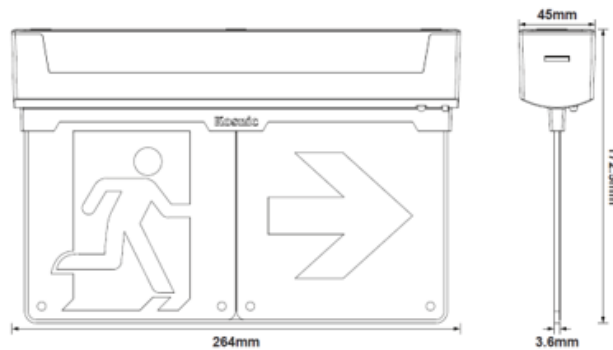
Overview

The Kosnic Doxa emergency exit sign is a self-contained, multi-purpose, maintained or non-maintained 3-hour emergency exit sign solution. The fitting is adaptable to be surface mounted in multiple positions. Also, available in self-test version.



General Information

IP Rating	IP20
Installation Area	Internal
UEM/EME Protection	Class II



Healthy Statuses:

- — System Healthy
- * — 1/2 s — Duration Test Pending
- * — 1/4 s — Duration Test Running
- * — 1/8 s — Functional Test Running

Symbols explained: ● ● Continuous On * * Flash — On - - - - Off

Faults & Warning:

- — Battery Charging Fault / Not Connected
- * — 1/4 s — Battery Duration Fault
- * — 1/8 s — Lamp or Luminaire Fault
- * * — 5 s — 1 s — Installation Fault Warning

Tel: 01635 523 713

Email: sales@kosnic.com

Kosnic.com



Kosnic Lighting KosnicUK KosnicLightingUK KosnicUK

7 7 Years
Product Warranty
UK Only


2 2 Years
On-Site Warranty
Main-land UK Only

Doxa 2



08863 DOX20103/SST

Push switch

 x1	FUNCTIONAL TEST
 x3	DURATION TEST
 HOLD	INDICATOR DIMMING

Overview

The Kosnic Doxa emergency exit sign is a self-contained, multi-purpose, maintained or non-maintained 3-hour emergency exit sign solution. The fitting is adaptable to be surface mounted in multiple positions. Also, available in self-test version.



IP20



General Information

IP Rating	IP20
Installation Area	Internal
UEM/EME Protection	Class II

Tel: 01635 523 713

Email: sales@kosnic.com

Kosnic.com

