

7 7 Years
Product Warranty
UK Only

2 2 Years
On-Site Warranty
Main-land UK Only



UEM Pro DALI

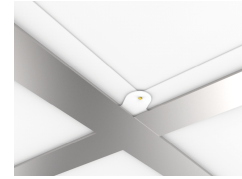
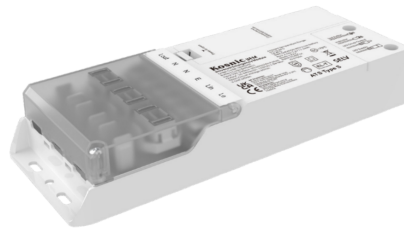
08760 UEM04/DA

Universal Emergency Module Pro DALI 4W

- Built-in loop-in and loop-out terminals
- DALI-2 conforming to EN 62386-202
- Built-in cable clamp with push to release function
- Designed to use with all LED luminaires (Class III) with external driver
- Easy plug & play installation and battery replacement
- For maintained or non-maintained emergency lighting systems
- Internal Li-ion battery with improved lifespan
- 12Vdc (Max. 100mA) power supply

Overview

The Universal Emergency Module (UEM) with available Automatic Self-Test (AST) version is suitable for class III luminaires with integrated LEDs and separate LED drivers. Provides an operation time of three hours. The UEM can be installed within a luminaire or within the ceiling void.



General Information

IP Rating	IP20
Protection Rating	Class II
Installation Area	Internal
UEM/EME Protection	Class II

Compliance

LVD	EN 61347-1:2015+A1:2021, EN 61347-2-7:2012+A1:2021, EN 62493:2015+A1:2022
EMC	EN 55015:2019+A11:2020, EN 61000-3-2:2019+A1:2021, EN 61000-3-3:2013+A1:2019+A2:2021, EN 61547:2023
Others	UKCA, CE, RoHS, WEEE, REACH

Technical Summary

Product Code	UEM04/DA
Weight	0.37Kg
Dimensions (L x W x D) (mm)	211x91x32
UEM/EME Battery Life	4 y
UEM/EME Input Voltage	220-240Vac 50/60Hz
UEM/EME Ambient Temperature Range	0°C to 45°C
UEM/EME Maximum Working Voltage (Vdc)	59 V
UEM/EME Test Function	Automatic and Manual
UEM/EME Protection	Class II
UEM/EME Weight	0.37 kg
UEM/EME Battery Output Wattage (max)	3 W
UEM/EME Dimensions (L x W x D) (mm)	211x91x32

Tel: 01635 523 713

Email: sales@kosnic.com

Kosnic.com



Kosnic Lighting KosnicUK KosnicLightingUK

7 7 Years
Product Warranty
UK Only

2 2 Years
On-Site Warranty
Main-land UK Only

UEM Pro DALI

08760 UEM04/DA

Accessories

Product Code	Description	Type
BAT26LI2	Li-ion Battery Pack 2600mAh for UEM04/DA	Battery
BAT20LFP2	LPF battery 6.4V 2000mAh for BEM03	Battery
BATS26LI2	Battery Li-ion 7.3V 2600MAH with temp. sensor for UEM Pro	

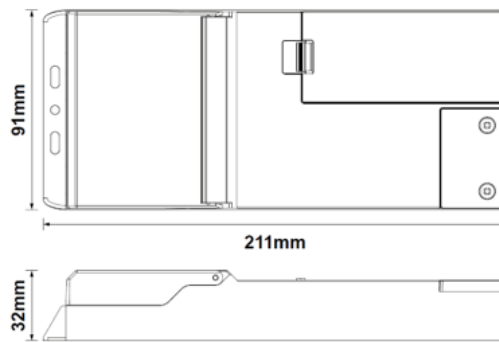
Overview

The Universal Emergency Module (UEM) with available Automatic Self-Test (AST) version is suitable for class III luminaires with integrated LEDs and separate LED drivers. Provides an operation time of three hours. The UEM can be installed within a luminaire or within the ceiling void.

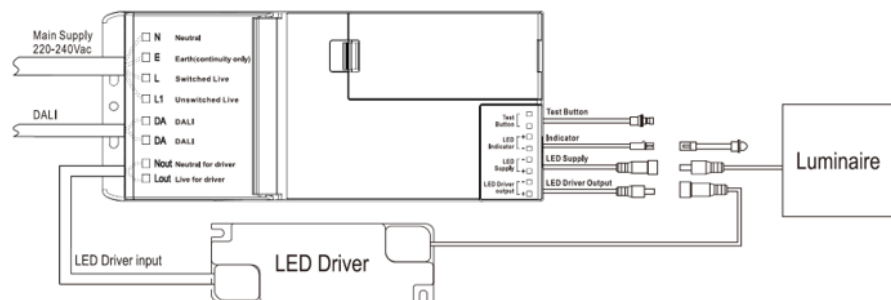


General Information

IP Rating	IP20
Protection	Class II
Rating	
Installation Area	Internal
UEM/EME Protection	Class II



Wiring Schematic



Tel: 01635 523 713

Email: sales@kosnic.com

Kosnic.com



7 7 Years
Product Warranty
UK Only

2 2 Years
On-Site Warranty
Main-land UK Only



UEM Pro DALI

08760 UEM04/DA

Output Characteristics - Standard

Load Voltage	24V	27V	30V	33V	36V	39V	42V	45V	48V	51V	54V
Output Current	86mA	80mA	71mA	64mA	57mA	52mA	47mA	43mA	39mA	36mA	33mA
Output Wattage	2.07W	2.17W	2.13W	2.10W	2.06W	2.02W	1.98W	1.93W	1.89W	1.85W	1.80W

Overview

The Universal Emergency Module (UEM) with available Automatic Self-Test (AST) version is suitable for class III luminaires with integrated LEDs and separate LED drivers. Provides an operation time of three hours. The UEM can be installed within a luminaire or within the ceiling void.



General Information

IP Rating	IP20
Protection Rating	Class II
Installation Area	Internal
UEM/EME Protection	Class II

Tel: 01635 523 713

Email: sales@kosnic.com

Kosnic.com



Kosnic Lighting KosnicUK KosnicLightingUK KosnicUK