

7 7 Years
Product Warranty
UK Only

2 2 Years
On-Site Warranty
Main-land UK Only

UEM 2 in 1

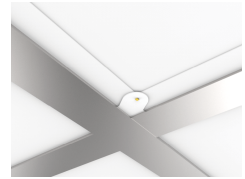
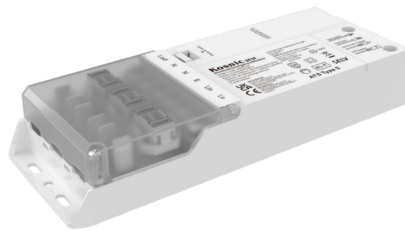
08705 UEM03/SST

Universal Emergency Module Duo 3.5W Standard&Self-test

- Select manual or self-test mode via the internal dual-mode DIP switch
- To adjust green LED indicator brightness, press and hold the test button for more than 3 seconds
- To set the duration test interval, press the push switch twice
- Loop-in loop-out push-wire terminals
- Automatic Self-test conforming to BS-EN-62034
- Designed for use with all LED luminaires (class III) with external driver
- Easy Plug & Play installation and battery replacement
- For maintained or non-maintained emergency lighting systems
- Internal Li-ion battery with improved lifespan

Overview

The 3.5W Universal Emergency Module (UEM03) is suitable for class III luminaires. This gives a typical power output of 3W but will depend on the characteristics of the luminaire.



General Information

IP Rating	IP20
Installation Area	Internal
UEM/EME Protection	Class II

Compliance

Others UKCA, CE, RoHS, WEEE, REACH

Technical Summary

Product Code	UEM03/SST
Dimensions (L x W x D) (mm)	185x71x32
UEM/EME Battery Life	4 y
UEM/EME Input Voltage	220-240Vac 50/60Hz
UEM/EME Ambient Temperature Range	0°C to 45°C
UEM/EME Maximum Working Voltage (Vdc)	60 V
UEM/EME Test Function	Standard or Self Test
UEM/EME Protection	Class II
UEM/EME Weight	0.28 kg
UEM/EME Battery Output Wattage (max)	3.5 W
UEM/EME Dimensions (L x W x D) (mm)	185x71x32
UEM/EME Emergency Operation Test	Automatic and Manual

Tel: 01635 523 713

Email: sales@kosnic.com

Kosnic.com



Kosnic Lighting KosnicUK KosnicLightingUK

7 7 Years
Product Warranty
UK Only

2 2 Years
On-Site Warranty
Main-land UK Only



UEM 2 in 1

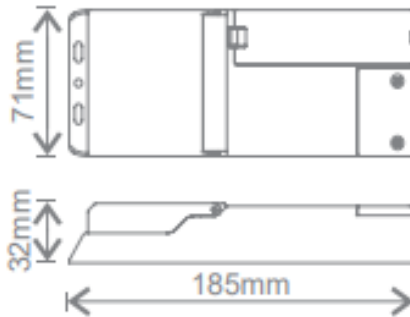
08705 UEM03/SST

Accessories

Product Code	Description	Type
BATS49LI1	Battery Li-ion, 4900mAh capacity, 3.6W	Battery

Overview

The 3.5W Universal Emergency Module (UEM03) is suitable for class III luminaires. This gives a typical power output of 3W but will depend on the characteristics of the luminaire.



General Information

IP Rating	IP20
Installation Area	Internal
UEM/EME Protection	Class II

Healthy Statuses:

- — System Healthy
- * — 1/2 s — Duration Test Pending
- * — 1/4 s — Duration Test Running
- * — 1/8 s — Functional Test Running

Symbols explained: ● ● Continuous On * * Flash — On - - - - Off

Faults & Warning:

- — Battery Charging Fault / Not Connected
- * - - - - 1/4 s - - - - Battery Duration Fault
- * - - - - 1/8 s - - - - Lamp or Luminaire Fault
- * * — 5 s — 1 s — Installation Fault Warning

Tel: 01635 523 713

Email: sales@kosnic.com

Kosnic.com



Kosnic Lighting KosnicUK KosnicLightingUK KosnicUK