

**7** 7 Years  
Product Warranty  
UK Only

**2** 2 Years  
On-Site Warranty  
Main-land UK Only

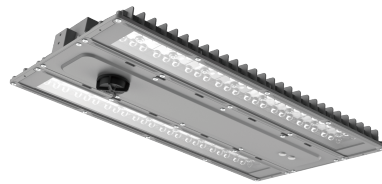
**Kosnic**

# Arcus Pro

08600 ARCP200-B250/DA

## Arcus Pro Low Bay DALI 100W/150W/200W switchable 30°x 90°

- High efficiency up to 171lm/W
- Optional plug-in emergency modules, available in standard, self-test and DALI
- Switchable wattage
- DALI dimming alternative driver available
- IP65, vandal resistant IK09
- Conduit, trunking or surface-mounting
- BESA box fitting points
- High rack optics



## Overview

The Arcus Pro adds wattage switching to the Arcus range, while keeping all the modularity. Along with the plug in sensors and multiple mounting options the Arcus Pro also has an option for DALI control. The Arcus Pro offers great energy saving and flexible modular design.



IP65



## General Information

Ambient Temperature Range (°C)	-20°C to 50°C
IK Rating	IK09
IP Rating	IP65
Materials	Housing: Die-cast aluminium
Protection Rating	Class I
Installation Area	Internal
L80B10 Lifetime (h) @Ta 25 °C	117,000 h

## Compliance

LVD	EN 60598-1:2024, EN 60598-2-1:2021, EN 62031:2020, EN 62493:2015+A1:2022
EMC	EN 55015:2019+A11:2020, EN 61000-3-2:2019+A1:2021, EN 61000-3-3:2013+A1:2019+A2:2021, EN 61547:2023
Others	UKCA, CE, RoHS, WEEE

## Technical Summary

Product Code	ARCP200-B250/DA
Input Voltage Supply	100-277Vac 50/60Hz
Inrush Current (peak/duration) (A)	130A/200µs
Settable Wattages	100W, 150W, 200W
Driver Code/Part number	SS-200NH-E260D (Sosen)
Driver Maximum Power (W)	200
Driver Output Current (mA)	770-1000
Power Factor	0.95
Driver Power Factor	0.97
Default CCT	5,000 K
SDCM of CCT	<6
CRI	82
Dimmable	Y
Flicker	<1%
Lumens Output Maximum	30,400 lm
Emergency Luminous Flux	850 lm
L70B50 Lifetime (h) @Ta 25 °C	187,000 h
L80B10 Lifetime (h) @Ta 25 °C	117,000 h
L90B10 Lifetime (h) @Ta 25 °C	54,000 h
Nominal Lifetime (h)	50,000 h
Glow wire temperature(°C)	650
Blue Light Hazard	RG1
Weight	4.15Kg
Dimensions (L x W x D) (mm)	473x270x50
BESA Entry	True
Beam Angle - Lumi (°)	30x90
LS Energy Efficiency Class	C

Tel: 01635 523 713

Email: sales@kosnic.com

Kosnic.com



Kosnic Lighting KosnicUK

KosnicLightingUK

**7** Years  
Product Warranty  
UK Only

**2** Years  
On-Site Warranty  
Main-land UK Only

# Arcus Pro



08600 ARCP200-B250/DA

## Overview

The Arcus Pro adds wattage switching to the Arcus range, while keeping all the modularity. Along with the plug in sensors and multiple mounting options the Arcus Pro also has an option for DALI control. The Arcus Pro offers great energy saving and flexible modular design.

## Optional Gear

Product Code	Description	Type
EMLB05/SST	Low Bay 5W EME Duo Manual & Self-test emergency module	Emergency Module
EMLB05/DA	Low Bay 5W EME DALI-2 & Self test emergency module	Self-test Emergency Module

## Accessories

Product Code	Description	Type
RMT-UNI	Universal Remote Control for Kosnic motion sensors	Remote Control

Power (W)	Lumen (lm)
100	17100
150	24400
200	30400

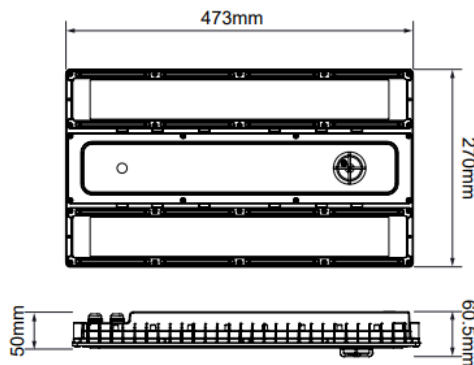


**IP65**



## General Information

Ambient Temperature Range (°C)	-20°C to 50°C
IK Rating	IK09
IP Rating	IP65
Materials	Housing: Die-cast aluminium
Nominal Lifetime (h)	50,000 h
Protection Rating	Class I
Installation Area	Internal



Tel: 01635 523 713

Email: [sales@kosnic.com](mailto:sales@kosnic.com)

[Kosnic.com](http://Kosnic.com)



Kosnic Lighting KosnicUK KosnicLightingUK KosnicUK