

7 7 Years
Product Warranty
UK Only

2 2 Years
On-Site Warranty
Main-land UK Only



Napa Pro

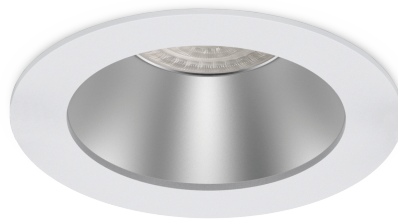
08080 NAPP8IN24-SLV

Napa Pro 8 inch Commercial Downlight CCT switch 13W-24W

- Switchable wattage and CCT (3000/4000/5700K)
- Optional plug-in emergency modules, available in standard, self-test and DALI
- Optional add-on emergency kits, available in standard and self-test
- DALI, 0-10V and PUSH dimming alternate driver available
- Surface-mount kits are available
- Low glare, UGR<19
- SDCM<3

Overview

Napa Pro LED Commercial
Downlight with a range of power
settings and switchable colour
temperature.



General Information

Ambient Temperature Range (°C)	-20°C to 50°C
IK Rating	IK04
IP Rating	IP54
Protection Rating	Class II
Installation Area	Internal
L80B10 Lifetime (h) @Ta 25 °C	78,000 h

Compliance

LVD	EN 60598-1:2024, EN 60598-2-2:2012, EN 62031:2020
EMC	EN 55015:2019+A11:2020, EN 61000-3-2:2019+A1:2021, EN 61000-3-3:2013+A1:2019+A2:2021, EN 61547:2023
Others	UKCA, CE, RoHS, WEEE

Technical Summary

Product Code	NAPP8IN24-SLV
Input Voltage Supply	220-240Vac 50/60Hz
Inrush Current (peak/duration) (A)	23A/53uS
Settable Wattages	13W, 16W, 18W, 20W, 24W
Driver Code/Part number	DR25C30-62
Driver Maximum Power (W)	25
Driver Output Current (mA)	300/400/450/500/620
Driver Power Factor	>0.9
Settable Colour Temperatures	3000K, 4000K, 5700K
SDCM of CCT	<6
CRI	82
Dimmable	N
Flicker	<1%
Lumens Output Maximum	3,240 lm
Maximum Efficiency	135 lm/W
Maintained Luminous Flux	320 lm
L70B50 Lifetime (h) @ Ta 25 °C	125,000 h
L80B10 Lifetime (h) @ Ta 25 °C	78,000 h
L90B10 Lifetime (h) @ Ta 25 °C	37,000 h
Nominal Lifetime (h)	50,000 h
Glow wire temperature(°C)	750
Blue Light Hazard	RG0
Weight	0.59Kg
Dimensions (L x W x D) (mm)	61xØ228
Cut-Out (mm)	Ø205
Beam Angle - Lumi (°)	60
LS Energy Efficiency Class	D

Tel: 01635 523 713

Email: sales@kosnic.com

Kosnic.com



Kosnic Lighting KosnicUK KosnicLightingUK

7 7 Years
Product Warranty
UK Only

2 2 Years
On-Site Warranty
Main-land UK Only

Napa Pro



08080 NAPP8IN24-SLV

Optional Gear

Product Code	Description	Type
UEM03	Universal Emergency Module 3W	Emergency Module
UEM03/ST	Universal Emergency Module 3W Self Test	Self-test Emergency Module
UEM04	Universal Emergency Module Pro 4W	Emergency Module
UEM04/ST	Universal Emergency Module Pro 4W Self Test	Self-test Emergency Module
BAT48LI1	Li-ion Battery Pack for UEM03	Battery
BAT26LI2	Li-ion Battery Pack 2600mAh for UEM04/DA	Battery
DRC30/DA	Dimmable Driver: 30W DALI, 1- 10V, Primary PUSH Driver	Dimmable Driver

Accessories

Product Code	Description	Type
NAPP8IN-SUR	Napa Pro 8 inch surface mount frame	Mount Frame



Overview

Napa Pro LED Commercial
Downlight with a range of power
settings and switchable colour
temperature.

General Information

Ambient Temperature Range (°C)	-20°C to 50°C
IK Rating	IK04
IP Rating	IP54
Nominal Lifetime (h)	50,000 h
Protection Rating	Class II
Installation Area	Internal

Variables Settings

Rated Power (W)	Current (mA)	CCT (k)	Luminous Flux (lm)	Power Factor
13	63	3000 Warm White	1625	0.9
13	63	4000 Cool White	1755	0.9
13	63	5700 Day Light	1755	0.9
16	73	3000 Warm White	2000	0.95
16	73	4000 Cool White	2160	0.95
16	73	5700 Day Light	2160	0.95
18	82	3000 Warm White	2250	0.95
18	82	4000 Cool White	2430	0.95
18	82	5700 Day Light	2430	0.95
20	92	3000 Warm White	2500	0.95
20	92	4000 Cool White	2700	0.95
20	92	5700 Day Light	2700	0.95
24	110	3000 Warm White	3000	0.95
24	110	4000 Cool White	3240	0.95
24	110	5700 Day Light	3240	0.95

Light Source only

Useful Luminous Flux (lm) at 55W	CCT (k)	Chromaticity co- ordinates (x)	Chromaticity co- ordinates (y)	R9 CRI	Peak Luminous Intensity
2580	3000	0.444	0.408	0	1440
2800	4000	0.375	0.370	15	1530
2800	5700	0.331	0.345	5	1530

Tel: 01635 523 713

Email: sales@kosnic.com

Kosnic.com



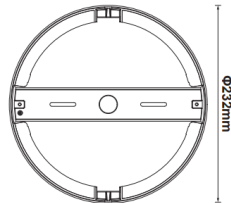
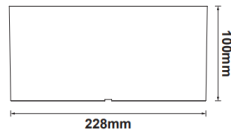
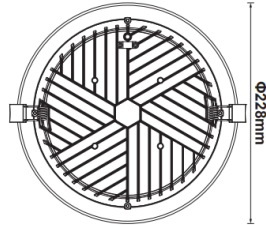
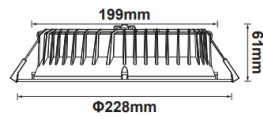
Kosnic Lighting KosnicUK KosnicLightingUK KosnicUK

7 7 Years
Product Warranty
UK Only

2 2 Years
On-Site Warranty
Main-land UK Only

Napa Pro

08080 NAPP8IN24-SLV



Overview

Napa Pro LED Commercial
Downlight with a range of power
settings and switchable colour
temperature.



IP54



General Information

Ambient Temperature Range (°C)	-20°C to 50°C
IK Rating	IK04
IP Rating	IP54
Nominal Lifetime (h)	50,000 h
Protection Rating	Class II
Installation Area	Internal

Tel: 01635 523 713

Email: sales@kosnic.com

Kosnic.com

