

7 7 Years
Product Warranty
UK Only

2 2 Years
On-Site Warranty
Main-land UK Only

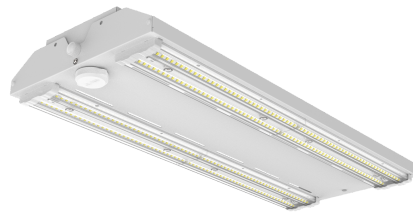
Kosnic 

Arcus 3

07189 ARC3200-WSCT

Arcus 3 lowbay 90°x110° 150/180/200W 4000/6500K switch Zhaga

- CCT switchable (4500K & 6500K)
- Plug in microwave motion & daylight sensor
- Wattage switching
- Plug-in emergency option
- Vandal resistant (IK10)
- Conduit, trunking or surface mounting
- BESA box fitting points



Overview

The Arcus 3 adds wattage and CCT switching to the Arcus range, while keeping all the modularity. Along with the plug in motion sensors and multiple mounting options the Arcus III also has an option for DALI control. The Arcus III offers great energy saving and flexible modular design.



IP20



General Information

Ambient Temperature Range (°C)	-20°C to 50°C
IK Rating	IK10
IP Rating	IP20
Protection Rating	Class I
Installation Area	Internal
L80B10 Lifetime (h) @Ta 25 °C	54,000 h

Compliance

LVD	EN 60598-1:2024, EN 60598-2-1:2021, EN 62031:2020, EN 62493:2015+A1:2022
EMC	EN 55015:2019+A11:2020, EN 61000-3-2:2019+A1:2021, EN 61000-3-3:2013+A1:2019+A2:2021, EN 61547:2023
Others	UKCA, CE, RoHS, WEEE

Technical Summary

Product Code	ARC3200-WSCT
Input Voltage Supply	220-240Vac 50/60Hz
Inrush Current (peak/duration) (A)	60A/44µs
Settable Wattages	150W, 180W, 200W
Settable Colour Temperatures	4500K, 6500K
SDCM of CCT	<6
CRI	≥82
Dimmable	N
Flicker	<5%
Lumens Output Maximum	28,000 lm
Maximum Efficiency	140 lm/W
Emergency Luminous Flux	850 lm
L70B50 Lifetime (h) @Ta 25 °C	54,000 h
L80B10 Lifetime (h) @Ta 25 °C	54,000 h
L90B10 Lifetime (h) @Ta 25 °C	39,000 h
Nominal Lifetime (h)	50,000 h
Glow wire temperature(°C)	650
Blue Light Hazard	RG1
Weight	4.2Kg
Dimensions (L x W x D) (mm)	616x245x80
Conduit Entry 20mm	Yes
Beam Angle - Lumi (°)	90x110
LS Energy Efficiency Class	D

Tel: 01635 523 713

Email: sales@kosnic.com

Kosnic.com



Kosnic Lighting KosnicUK

KosnicLightingUK

7 7 Years
Product Warranty
UK Only

2 2 Years
On-Site Warranty
Main-land UK Only

Arcus 3



07189 ARC3200-WSCT

Optional Gear

Product Code	Description	Type
MWS-ZGA	Zhaga microwave motion sensor, 1-10V dim output	Microwave Sensor
BEM05/ST	Emergency module 5W Self-test push-in for Kosnic Lowbays	Self-test Emergency Module
BEM05	Emergency module 5W standard push-in for Kosnic Lowbays	Emergency Module
MWS-DC	Plug-in microwave motion sensor 12V DC PWM	Microwave Sensor
PIR-ZGA	PIR sensor with Zhaga connector with ON/OFF 0-10V Dimming	PIR Sensor

Overview

The Arcus 3 adds wattage and CCT switching to the Arcus range, while keeping all the modularity. Along with the plug in motion sensors and multiple mounting options the Arcus III also has an option for DALI control. The Arcus III offers great energy saving and flexible modular design.



General Information

Ambient Temperature Range (°C)	-20°C to 50°C
IK Rating	IK10
IP Rating	IP20
Nominal Lifetime (h)	50,000 h
Protection Rating	Class I
Installation Area	Internal

Settable (Default in Bold)		Variable		
CCT (K)	Rated Power (W)	Maximum Current Draw (mA)	Total Luminous Flux (lm)	Power Factor
4500	150	694	21000	0.94
6500	150	694	21000	0.94
4500	180	824	25200	0.95
6500	180	824	25200	0.95
4500	200	915	28000	0.95
6500	200	915	28000	0.95



Tel: 01635 523 713

Email: sales@kosnic.com

Kosnic.com



Kosnic Lighting KosnicUK KosnicLightingUK KosnicUK