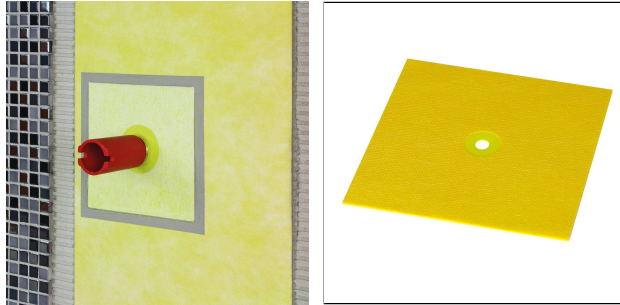




# DURABASE WP

Pipe Collar For Wp, Wp++ And Ci++



## ACCESSORIES

Tube joint tape, sealing corners for external and internal use, pipe collars and pipe collars  
Classic Flex M310

## PROPERTIES

Colour: yellow / black

Water impermeability (DIN EN 1928, method B): > 3.0 bar

UV resistance (DIN EN 4892-2): 500 h

Equivalent air layer thickness (sd) (DIN EN 1931): > 85m

Adhesive strength (DIN 1348): > 0.2 Nm / mm<sup>2</sup>

Fire class: B2 (DIN EN 4102)

Temperature resistance: -30°C to +90°C

Resistance after 7 days at room temperature (internal measurement)

Hydrochloric acid 3%: resistant

Sulphuric acid 35%: resistant

Citric acid 100g/l: resistant

Lactic acid 5%: resistant

Sodium hypochlorite 0.3g/l: resistant

Salt water (20 g/l sea salt): resistant

Potassium hydroxide 3% / 20%: resistant/resistant

Alkali 28d / 40° / 3% (test specification AbP): resistant

Alkali (test specification ETAG 022 16 weeks): resistant

## MATERIAL

Polypropylene fleece

Polyethylene film

## PROCESSING

1. The substrate must be dry, free of any substances that could impair adhesion, load-bearing, level and free of cracks. Any levelling

Please note: For technical reasons, tolerances in color effects of the materials and print are possible.  
All information is based on the best of our knowledge and belief. No guarantee can be derived from this.  
We reserve the right to any technical changes if they are in the interest of progress or if they are production-related.

**DURAL GmbH** | Südring 11 | D-56412 Ruppach-Goldhausen | Germany | +49 2602/9261-0 | info@dural.com

**DURAL Ltd.** | Unit 6a | Wakefield Business Centre Denby Dale Rd | Wakefield | WF2 7AZ | United Kingdom | ukinfo@dural.com

The recognised standards and regulations of technology must be observed. Previous data sheets are invalid.

**www.dural.com**



measures must be carried out before laying DURABASE WP++

1. If necessary, prepare the installation substrates with a suitable primer.
2. Divide the surface with DURABASE WP++ and cut to size.
3. Apply suitable tile adhesive to the substrate using a 4 x 4 mm or 6 x 6 mm notched trowel. The tile adhesive must adhere to the substrate and mechanically interlock with the DURABASE WP++ mat.
4. Embed the cut strips completely in the tile adhesive with the black backing fleece facing downwards. Adjacent strips must be laid edge to edge. Using a smoothing trowel or the smooth side of the notched trowel, press the carrier fleece into the mortar over the entire surface, pressing out any air pockets. The overlap of the components – waterproof membrane must be at least 5 cm on each side and must be coated over the entire surface with CLASSIC-FLEX polymer adhesive. To do this, apply CLASSIC-FLEX with a cartridge gun and spread evenly with a fine-toothed trowel. Press the component firmly (e.g. with a narrow pressure roller) and smooth out any bubbles. It is not possible to lay the DURABASE WP++ mat loosely.
5. Seal the transition areas between the wall and floor with DURABASE tube joint tape, internal and external corners and pipe connections with the prefabricated moulded parts, ensuring that they are completely bonded to the substrate, the waterproof membrane or the penetrations.
6. Once sufficiently cured, the tiles can be laid on the mat using a suitable tile adhesive. Wall applications are possible.

The generally accepted rules of technology and tiling must be observed. Suitability for use with mechanical and chemical resistance must always be checked in each individual case.

### TECHNICAL DIMENSIONS AND PRODUCT VARIANTS

Material	[Polypropylene],[TPE]
Colour	yellow
dimension	120 mm x 120 mm, 425 mm x 425 mm, 150 mm x 150 mm, 200 mm x 200 mm

### PRODUCT VARIANTS

Ident	Colour
WPFM 120/2	yellow
WPFM 120/25	yellow
WPFM 425	yellow
WPFM 150/25	yellow
WPFM 200/25	yellow

Please note: For technical reasons, tolerances in color effects of the materials and print are possible. All information is based on the best of our knowledge and belief. No guarantee can be derived from this. We reserve the right to any technical changes if they are in the interest of progress or if they are production-related.