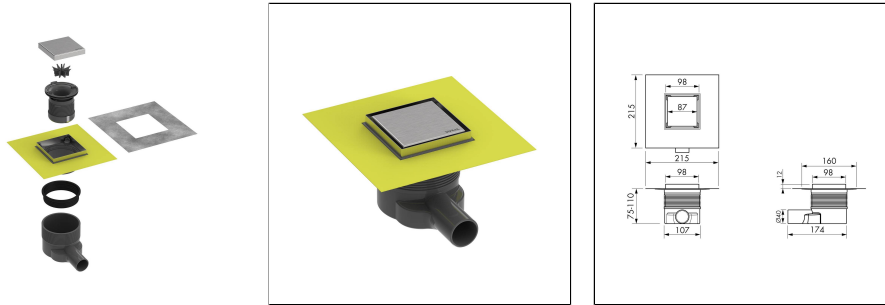




TI-DRAIN plus

Practical Point Drain As A Complete Set – Height-Adjustable And With A 2-In-1 Design



ACCESSORIES

A vertical drain (TDPAV) and fire protection sleeve (BSM) are available as optional extras. Fleece sleeve if sealing with waterproof membrane

PROPERTIES

Horizontal drain pipe outlet DN 40
 Drainage capacity: 35 l/min
 Water seal height: 30 or 50 mm
 Installation height: 75-110 mm (height can be shortened)

2 in 1 cover: cover or tile recess

MATERIAL

ABS plastic (acrylonitrile butadiene styrene)
 polypropylene

Stainless steel V2A/304 is particularly suitable for applications subject to high mechanical stress and for applications with particularly high requirements for cleanliness, hygiene and chemical resistance. Contact with products containing hydrochloric acid should be avoided.

No tools made of unalloyed steel may be used during processing. Open cut edges are not rust-resistant. If necessary, separate rust protection must be applied.

Even with stainless steel, flash rust may occur depending on the environmental conditions and should be removed immediately.

The suitability for use in terms of mechanical and chemical resistance must always be checked on a case-by-case basis.

CARE

The drain does not usually require any special maintenance, as the majority of the elements are located in the floor construction.

Please note: For technical reasons, tolerances in color effects of the materials and print are possible. All information is based on the best of our knowledge and belief. No guarantee can be derived from this. We reserve the right to any technical changes if they are in the interest of progress or if they are production-related.

Stainless steel V2A/304 does not require any special care. If necessary, it can be cleaned simply with clear, clean water and a few drops of washing-up liquid. Then wipe dry.

Avoid using acidic, alkaline and abrasive cleaning agents. Flash rust can be removed with commercially available polishes suitable for stainless steel.

PROCESSING

1. Determine the height of the finished tile covering.
2. Include the planned screed, including a gradient of 2%, in the calculation.
3. Next, include the height of the substrate including insulation, screed thickness, wall-to-floor connection with joint and the planned tile thickness including mortar bed in the height calculation.
4. Connect the base body to the drain. If necessary, the drain and odour trap can be shortened.
5. Position the base body and adjust it to the required height using tile adhesive. Caution: The base body must be aligned both lengthwise and crosswise. We recommend that you mask the drain opening of the point drain before installation to prevent contamination in the drain pipe.
6. Underlay the drain and connect it to the drainage system. Check the system for leaks.
7. Finish the screed. The base body must be supported and compacted with screed over the entire surface up to the top edge of the flange. Cavities must be avoided at all costs.
8. Once the screed has dried, apply the yellow pipe collar to the screed by gluing it in place. Complete the floor sealing. If using a waterproof membrane, first apply the fleece sealing sleeve included in the scope of delivery to the yellow self-adhesive sealing mat by gluing it in place.
9. Place the cover. For primary water drainage, seal the entire frame of the channel with sealing adhesive.
10. After tiling, the transition between the tiled floor and the shower channel must be permanently sealed with an elastic joint (primary water drainage). The adhesive surfaces must be free of mortar, adhesive and other materials that reduce adhesion.

The generally accepted rules of technology and tiling must be observed. Suitability for use with mechanical and chemical resistance must always be checked in each individual case.

TECHNICAL DIMENSIONS AND PRODUCT VARIANTS

Material	[ABS],[Stainless Steel (304)]
Surface	[brushed]
Colour	natural
installation height mm	75
sealing water height mm	50
dimension	100 x 100

PRODUCT VARIANTS

Please note: For technical reasons, tolerances in color effects of the materials and print are possible. All information is based on the best of our knowledge and belief. No guarantee can be derived from this. We reserve the right to any technical changes if they are in the interest of progress or if they are production-related.



Ident	Surface	Colour
TDP SET 1010-SF	brushed	natural

Please note: For technical reasons, tolerances in color effects of the materials and print are possible.
All information is based on the best of our knowledge and belief. No guarantee can be derived from this.
We reserve the right to any technical changes if they are in the interest of progress or if they are production-related.