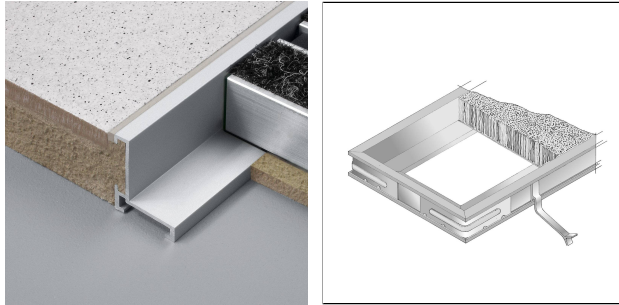




DURAWAY ENTRY

Frame Profile System For Entrance Matting System



ACCESSORIES

Angle connector, anchor

PROPERTIES

Mat frame

For mat thicknesses 17 and 22 mm

Angle frame thickness: 6 mm

Angle height: 24 or 29 mm

Angle width: 24 or 29 mm

MATERIAL

EFAE=aluminium,

Aluminium can be used wherever medium mechanical loads are expected. Contact with alkaline materials (e.g. tile adhesive) can cause discolouration that is difficult to remove. High humidity during the drying phase can intensify this process. Always wipe tile adhesive or grout off visible surfaces immediately with plenty of water, then wipe dry and ensure good room ventilation.

EV=Galvanised iron

Galvanised iron is particularly suitable for applications subject to high mechanical stress and for applications with particularly high requirements for cleanliness, hygiene and chemical resistance. Contact with products containing hydrochloric acid must be avoided. Do not use tools made of unalloyed steel during processing. Open cut edges are not rust-resistant. If necessary, separate rust protection should be applied.

Even with galvanised iron, flash rust may occur depending on the environmental conditions and should be removed immediately.

EA=brass,

Brass is particularly suitable for indoor areas with medium mechanical stress.

Please note: For technical reasons, tolerances in color effects of the materials and print are possible.
All information is based on the best of our knowledge and belief. No guarantee can be derived from this.
We reserve the right to any technical changes if they are in the interest of progress or if they are production-related.



Brass oxidises (patinates) when exposed to air. This process can be accelerated when used in damp rooms or in combination with aggressive cleaning agents, and stains may form. If necessary, polish with special cleaning pastes.

The suitability for use in terms of mechanical and chemical resistance must always be checked on a case-by-case basis.

The suitability with regard to mechanical and chemical resistance must always be checked in each individual case.

CARE

Aluminium does not require any special care. If necessary, it can be cleaned with clear, clean water and a few drops of washing-up liquid. Then wipe dry.

Avoid using acidic, alkaline and abrasive cleaning agents.

PROCESSING

1. Assemble the DURAWAY-ENTRY mat frames to the desired installation height (18 mm or 23 mm) using the connectors and screws supplied.
2. Fit the pre-assembled mat frame with the anchors provided and insert it into the screed. Make sure that the frame is fully supported, lies flat and is installed at exactly the desired height.
3. The adjacent tiles can be laid using either the thin-bed or thick-bed method. Ensure that the surface is flush with the frame and that there is a joint width of 2–3 mm all around.
4. Once the laid surfaces have completely hardened, the grouting can be carried out.
5. Once the joints are completely finished and dry, the DURAWAY doormat can be inserted.

Protect visible areas of the frame from contact with tile adhesive or joint mortar. Remove any contamination immediately with a cloth and clear water and then rub dry.

The generally accepted rules of technology must be observed.

The suitability of the product in relation to mechanical and chemical stresses must always be checked in each individual case.

TECHNICAL DIMENSIONS AND PRODUCT VARIANTS

Material	[Steel], [Brass], [Aluminium]
Surface	[galvanised], [natural], [anodised]
Colour	silver
Length	300 cm

PRODUCT VARIANTS

Ident	Surface	Colour	Length
-------	---------	--------	--------

Please note: For technical reasons, tolerances in color effects of the materials and print are possible. All information is based on the best of our knowledge and belief. No guarantee can be derived from this. We reserve the right to any technical changes if they are in the interest of progress or if they are production-related.



EFAE 1823/300	anodised	silver	300 cm
EV 1823	galvanised		
EA 1823	natural		

Please note: For technical reasons, tolerances in color effects of the materials and print are possible.
All information is based on the best of our knowledge and belief. No guarantee can be derived from this.
We reserve the right to any technical changes if they are in the interest of progress or if they are production-related.