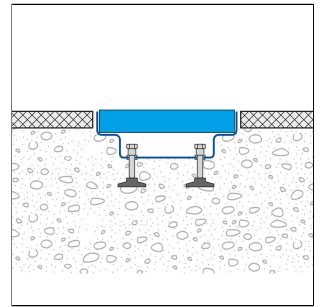
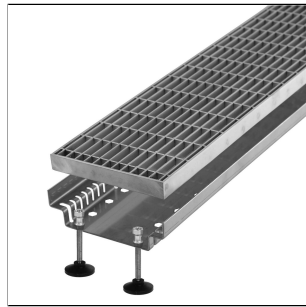
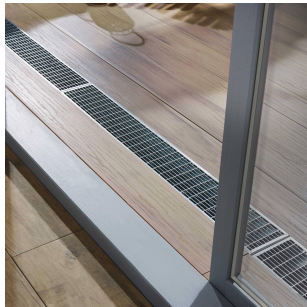




DW-DRAIN 160

Drainage channel incl. grate



ACCESSORIES

Matching end caps and connectors are available as accessories.

PROPERTIES

Unevenness of up to 15° can be absorbed by the joint foot.

MATERIAL

Galvanised steel or stainless steel V2A/304 is particularly suitable for applications subject to high mechanical stress. Contact with products containing hydrochloric acid must be avoided. No tools made of unalloyed steel may be used for processing. Open cut edges are not rust-resistant. If necessary, a separate rust protection should be applied there. Depending on the environmental conditions, flash rust may also occur on stainless steel and should be removed immediately.

The suitability of the material with regard to mechanical and chemical resistance must always be checked on a case-by-case basis.

The suitability for use in terms of mechanical and chemical resistance must always be checked on a case-by-case basis.

CARE

Galvanised steel or stainless steel (304) does not require any special care. If necessary, it can be cleaned simply with clear, clean water and a few drops of washing-up liquid. Then wipe dry. Acidic, alkaline and abrasive cleaning agents should be avoided. Flash rust can be removed with commercially available polishes suitable for stainless steel.

PROCESSING

GENERAL INSTALLATION INSTRUCTIONS

- Planning and installation must be carried out in such a way that regular maintenance is possible.
- Installation may only be carried out on a sufficiently compacted substrate to prevent settlement. A level surface must be prepared. The base layers for the adjacent surface (paving, terrace slabs) must also be compacted in accordance with the rules of technology. If necessary, plate load tests must be carried out.
- The channel foundation must be compacted accordingly.
- The upper edge of the surface covering must permanently protrude 2-3 mm above the upper edge of the channel.
- The superstructure must be finished directly up to the channel. Expansion joints or cut paving stones directly at the channel are not permitted.
- The channel must be thoroughly cleaned after installation (follow the care instructions!).

INSTALLATION

Please note: For technical reasons, tolerances in color effects of the materials and print are possible. All information is based on the best of our knowledge and belief. No guarantee can be derived from this. We reserve the right to any technical changes if they are in the interest of progress or if they are production-related.



- Appropriate protective measures must be taken under the drainage channel to prevent damage to the substructure.
- If necessary, we recommend laying the channel on one of our drainage mats (DURABASE DR100 or DR100++ depending on the type of construction) to optimise surface drainage.

Depending on the type of installation, adjust the height position of the drainage channel during the paving work. The length of the channel must also be adjusted and the channel must be aligned accordingly. When using several channel sections, use the connectors available in the product range. The end caps available in the range must be used at the ends of the channels. (If any cuts are made, the cut edges must be treated accordingly to prevent corrosion).

Now work the surface covering to fit the channel.

TECHNICAL DIMENSIONS AND PRODUCT VARIANTS

Material	[Steel], [Stainless Steel (304)]
Surface	[natural], [galvanised]
Colour	natural
Length	100 cm
Height	40 mm
Width mm	160 mm
height up to	110 mm

PRODUCT VARIANTS

Ident	Height	Surface	Colour	Length
DWD-VZ 110-160/100	40 mm	galvanised	natural	100 cm
DWD-E 110-160/100	40 mm	natural	natural	100 cm

Please note: For technical reasons, tolerances in color effects of the materials and print are possible. All information is based on the best of our knowledge and belief. No guarantee can be derived from this. We reserve the right to any technical changes if they are in the interest of progress or if they are production-related.