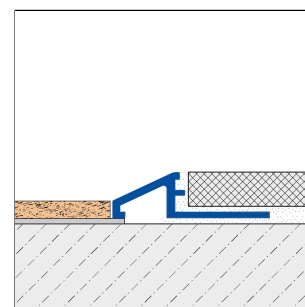
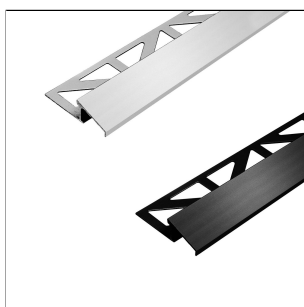


# DURATRANS TR

Aluminium Profile For Compensating The Height Of Tiles To Adjacent Aurfaces

Valid from: 01/06/2025



## TECHNICAL DIMENSIONS AND PRODUCT VARIANTS

Material	[Aluminium]
Surface	[high-gloss anodised], [brushed],[high-gloss anodised], [anodised],[brushed], [powder coated], [natural], [anodised]
Colour	silver, titanium, mercury, bronze, white, natural, black matt (RAL 9005)
Length	250 cm
sight width	17 mm, 21 mm
Height	12.5 mm, 10 mm

## MATERIAL

Aluminium can be used wherever a medium mechanical stresses are expected. Contact with alkaline materials (e.g. tile adhesive) can lead to discolouration, which can be difficult to remove afterwards. High humidity during the drying phase can intensify this process. Always wipe off tile adhesive or grout on visible surfaces immediately with plenty of water, then wipe dry and ensure that the room is well ventilated.

Suitability in terms of mechanical and chemical resistance must always be checked on a case-by-case basis.

## CARE

Aluminium does not require any special care. If necessary, it can simply be damp-cleaned with clear, clean water and a few drops of washing-up liquid. Then wipe dry.

Acidic, alkaline and abrasive cleaning agents should be avoided.

## PROCESSING

1. Select the profile according to the tile thickness.
2. Apply tile adhesive with a notched trowel.
3. Press the profile into the adhesive bed and align.
4. Fill over the entire surface of the fixing leg.
5. Press the tiles firmly into place and align them so that they are flush with the upper edge of the profile. Lay the tiles fully flush.

Please note: For technical reasons, tolerances in color effects of the materials and print are possible.  
All information is based on the best of our knowledge and belief. No guarantee can be derived from this.  
We reserve the right to any technical changes if they are in the interest of progress or if they are production-related.



- 6 Use suitable inner or outer corner pieces.
7. Leave a grout line of 1-2 mm to the profile.
8. Fill the space between the tiles and the profile completely with grout.

Protect visible surfaces from contact with tile adhesive or grout and, if necessary, clean immediately with a cloth and clean water. Then wipe dry.

The generally recognised rules of technology must be observed. Suitability in terms of mechanical and chemical resistance must always be checked on a case-by-case basis.

## PRODUCT VARIANTS

Ident	Height	Surface	Colour	Length
DTAE TR 100/250	10 mm	anodised	silver	250 cm
DTA TR 100/250	10 mm	natural	natural	250 cm
DTACM TR 1011/250	10 mm	powder coated	black matt (RAL 9005)	250 cm
DTAE TR 125/250	12.5 mm	anodised	silver	250 cm
DTA TR 125/250	12.5 mm	natural	natural	250 cm
DTACM TR 1211/250	12.5 mm	powder coated	black matt (RAL 9005)	250 cm
DTAE TR 100-B-SF/250		anodised, brushed	bronze	
DTAE TR 125-B-SF/250		anodised, brushed	bronze	
DTA TR 1028-SF/250		brushed, high-gloss anodised	mercury	
DTA TR 1228-SF/250		brushed, high-gloss anodised	mercury	
DTA TR 1062-SF/250		brushed, high-gloss anodised	silver	
DTA TR 1262-SF/250		brushed, high-gloss anodised	silver	
DTA TR 1063-SF/250		brushed, high-gloss anodised	titanium	
DTA TR 1263-SF/250		brushed, high-gloss anodised	titanium	
DTA TR 1062/250		high-gloss anodised	silver	
DTA TR 1262/250		high-gloss anodised	silver	
DTA TR 1063/250		high-gloss anodised	titanium	
DTA TR 1263/250		high-gloss anodised	titanium	
DTAC TR 1030/250		powder coated	white	
DTAC TR 1230/250		powder coated	white	

Please note: For technical reasons, tolerances in color effects of the materials and print are possible.  
All information is based on the best of our knowledge and belief. No guarantee can be derived from this.  
We reserve the right to any technical changes if they are in the interest of progress or if they are production-related.