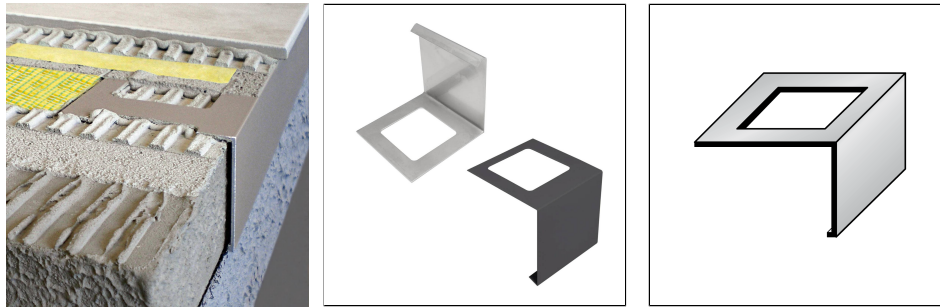




DURABAL BW

Connector For The Durabal BW Balcony Angle Profile



TECHNICAL DIMENSIONS AND PRODUCT VARIANTS

| | |
|------------|---|
| Material | Aluminium, Stainless Steel (304) |
| Surface | powder coated, anodised, natural |
| Colour | silver, natural, anthracite grey (RAL 7016) |
| Height (b) | 55 mm, 75 mm, 95 mm |
| Width mm | 80 mm |

MATERIAL

Aluminium can be used wherever a medium mechanical stresses are expected. Contact with alkaline materials (e.g. tile adhesive) can lead to discolouration, which can be difficult to remove afterwards. High humidity during the drying phase can intensify this process. Always wipe off tile adhesive or grout on visible surfaces immediately with plenty of water, then wipe dry and ensure that the room is well ventilated.

Suitability in terms of mechanical and chemical resistance must always be checked on a case-by-case basis.

Stainless steel (V2A/304) is particularly suitable for areas of application subject to high mechanical stresses and where particularly high demands are placed on cleanliness, hygiene and chemical resistance. Contact with products containing hydrochloric acid should be avoided.

Tools made of unalloyed steel must not be used during processing. Open cut edges are not rust-resistant. If necessary, separate rust protection must be applied to cut-edges.

Depending on the environmental conditions, rust film may also form on stainless steel and should be removed immediately.

The usability in terms of mechanical and chemical resistance must always be checked on a case-by-case basis.

CARE

Aluminium does not require any special care. If necessary, it can simply be damp-cleaned with clear, clean water and a few drops of washing-up liquid. Then wipe dry.

13 March 2025 09:04 PM

Please note: For technical reasons, tolerances in color effects of the materials and print are possible. All information is based on the best of our knowledge and belief. No guarantee can be derived from this. We reserve the right to any technical changes if they are in the interest of progress or if they are production-related.



Acidic, alkaline and abrasive cleaning agents should be avoided.

Stainless steel (V2A/304) does not require any special care. If necessary, it can simply be cleaned with clear, clean water and a few drops of washing-up liquid. Then wipe dry.

Acidic, alkaline and abrasive cleaning agents should be avoided. Flash rust can be removed with commercially available polishes suitable for stainless steel.

PROCESSING

1. Select and adjust the profile according to the required installation height.
2. Apply tile adhesive to the substrate (concrete slab or dry screed) using a notched trowel.
3. Press the profile into the adhesive bed and check height and alignment.
4. If necessary, use suitable external corners. To connect several profiles and corners, use the connectors available as accessories.
5. Cover the entire surface of the fixing leg with adhesive.
6. Press the covering firmly into place and align it so that it sits slightly above the profile edge (this acts as a drip sill).

Protect visible areas from contact with tile adhesive or grout and, if necessary, clean immediately with a sponge and clean water. Then rub dry.

The generally recognised rules of technology must be observed. The suitability with regard to mechanical and chemical resistance must always be checked in each individual case.

PRODUCT VARIANTS

| Ident | Height (b) | Surface | Colour |
|----------------|------------|---------------|----------------------------|
| BWAE 550-XC/1 | 55 mm | anodised | silver |
| BWE 55-XC/1 | 55 mm | natural | natural |
| BWAC 5516-XC/1 | 55 mm | powder coated | anthracite grey (RAL 7016) |
| BWAE 750-XC/1 | 75 mm | anodised | silver |
| BWE 75-XC/1 | 75 mm | natural | natural |
| BWAC 7516-XC/1 | 75 mm | powder coated | anthracite grey (RAL 7016) |
| BWAE 950-XC/1 | 95 mm | anodised | silver |
| BWE 95-XC/1 | 95 mm | natural | natural |
| BWAC 9516-XC/1 | 95 mm | powder coated | anthracite grey (RAL 7016) |

13 March 2025 09:04 PM

Please note: For technical reasons, tolerances in color effects of the materials and print are possible. All information is based on the best of our knowledge and belief. No guarantee can be derived from this. We reserve the right to any technical changes if they are in the interest of progress or if they are production-related.