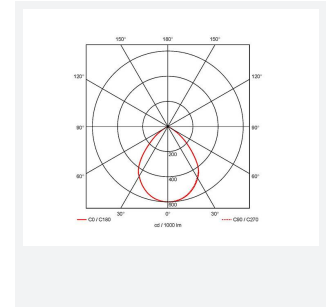
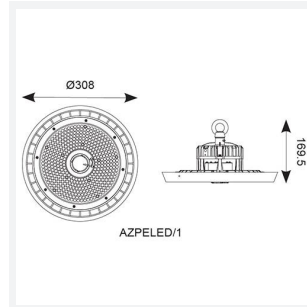
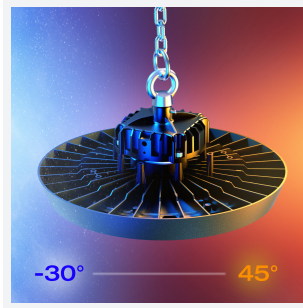
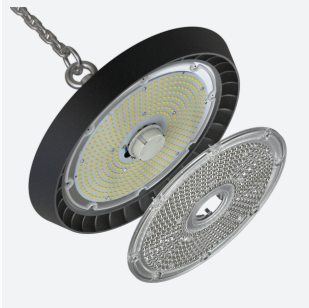




Z LED Performance

Z LED Performance 1 Daylight OCTO Smart
Code: AZPELED/1/DL/OCTO

| | |
|---------------|--|
| Category | High/Low Bay |
| Application | Ancillary, Hospitality, Industrial, Retail |
| Specification | Performance |



PRODUCT FEATURES

- Robust LED low/high bay for industrial, commercial and retail applications
- Alternative installation options by means of drop rods, jack chain and catenary wire
- Bracket accessories available for ceiling or wall mounting
- 1-10V dimmable as standard
- Die-cast powder coated construction and heatsink for optimum thermal and performance
- Additional lens options offer mid (85°) and narrow (55°) beam angles; ideal for racking aisles
- Pre-wired with 1.5M of H07RN-F cable for ease and speed of installation

| GENERAL INFORMATION | |
|---------------------|--------------|
| Wattage | 100W |
| Lumens Delivered | 15000lm |
| Lm/W | 150lm/W |
| Beam Angle | 110 |
| CRI | 80 |
| CCT | 6500K |
| Input | 220/240V |
| Operating Temp | -30°C - 45°C |
| SDCM | 3 |
| UGR | 27 |

| TECHNICAL INFORMATION | |
|--------------------------------|--------------------------|
| Light Source | LED |
| Colour / Finish | Black |
| IP Rating | IP65 |
| Class Protection | 1 |
| Internal / External | Internal / External |
| Surface / Recessed / Suspended | Ceiling, Suspended |
| Lumen Depreciation | L80 54,000h |
| Warranty (Years) | 5 |
| CE Mark | Yes |
| Diameter | 308 mm |
| Height | 181 mm |
| Accessories | AZPELED/FB2, AZPELED/REF |

