



# Wolf



Part of the Bulkheads product category



**Model** Wolf Mini Wallpack CCT Self-Test Emergency Black  
**Code** AWOLF/MINI/BLK/SM3  
**Application** Ancillary, Commercial, Healthcare, Hospitality, Industrial, Outdoor, Retail

## GENERAL INFORMATION

<b>Input</b>	220-240V
<b>Wattage</b>	6W/10W
<b>Operating Temp</b>	0°C - 40°C
<b>Lumens Delivered</b>	500lm / 1000lm (4000K)
<b>lm/W</b>	125lm/W (4000K)
<b>CCT</b>	3000/4000K
<b>Beam Angle</b>	70/140

## MATERIAL INFORMATION

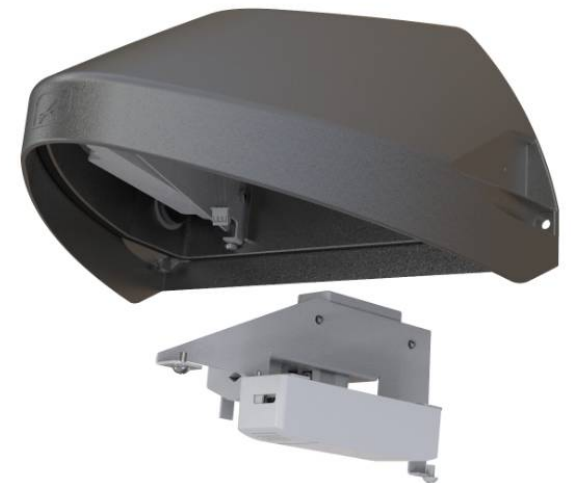
<b>Main Material</b>	Aluminium
<b>Diffuser Material</b>	Polycarbonate
<b>Product Weight without Packaging</b>	1.95 kg
<b>Colour / Finish</b>	Black
<b>Height</b>	155 mm

## TECHNICAL INFORMATION

<b>Class Protection</b>	1
<b>Light Source</b>	LED
<b>SDCM (Initial Macadam)</b>	3
<b>CRI</b>	82
<b>Internal / External</b>	External
<b>Surface / Recessed / Suspended</b>	Wall
<b>Power Factor</b>	0.90

## PRODUCT FEATURES

- Modern, robust die-cast aluminium low glare wall pack suitable for commercial and industrial applications
- Advanced lens technology offers wide distribution for optimum spacing and uniformity; whilst ensuring minimal uplight and light pollution
- Reduced light pollution with 0% upward light distribution, helps with compliance with Dark Skies recommendations
- Power selectable; offering a choice of 2 outputs, in one luminaire
- High efficiency up to 125 Lm/W





# Wolf



Part of the Bulkheads product category



**Model** Wolf Mini Wallpack CCT Self-Test Emergency Black  
**Code** AWOLF/MINI/BLK/SM3  
**Application** Ancillary, Commercial, Healthcare, Hospitality, Industrial, Outdoor, Retail

