



# Vantage Downlight

Part of the Downlights product category



**Model** Vantage CCT 1 Downlight  
**Code** AVANTLED1  
**Application** Ancillary, Commercial, Education, Healthcare, Hospitality, Retail

## GENERAL INFORMATION

<b>Input</b>	220-240V
<b>Wattage</b>	8.5W
<b>Operating Temp</b>	-25°C - 40°C
<b>Lumens Delivered</b>	740lm (4000K)
<b>lm/W</b>	107lm/W (4000K)
<b>CCT</b>	3000/4000/6000K
<b>UGR</b>	27
<b>Beam Angle</b>	75

## MATERIAL INFORMATION

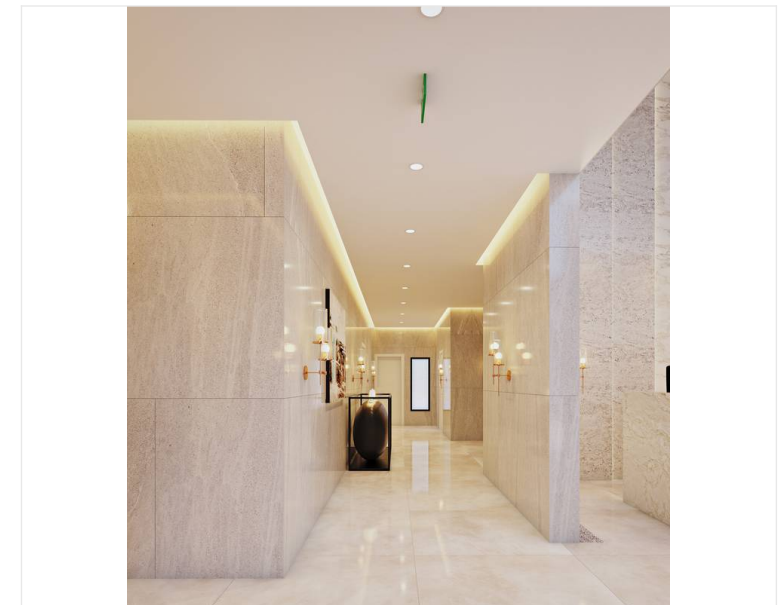
<b>Main Material</b>	Aluminium
<b>Product Weight without</b>	0.144 kg
<b>Packaging</b>	
<b>Colour / Finish</b>	White
<b>Diameter</b>	82 mm
<b>Height</b>	54 mm

## TECHNICAL INFORMATION

<b>Class Protection</b>	2
<b>Light Source</b>	LED
<b>SDCM (Initial Macadam)</b>	6
<b>CRI</b>	80
<b>Internal / External</b>	Internal
<b>Surface / Recessed / Suspended</b>	Recessed
<b>Power Factor</b>	0.5
<b>L70 @ 25°C</b>	L70 B50 60,000h

## PRODUCT FEATURES

- CCT selectable LED performance downlight suitable for commercial and education applications
- Deep cut-off angle for glare control and comfort
- One product provides 3000K,4000K and 6500K colour temperature options
- Downlight design allows installation into existing hole cut-outs from 68mm,100mm, 150mm and 200mm
- Anti-Ligature kit available for installation in secure environments such as healthcare and educational facilities





# Vantage Downlight



Part of the Downlights product category

- Model** Vantage CCT 1 Downlight
- Code** AVANTLED1
- Application** Ancillary, Commercial, Education, Healthcare, Hospitality, Retail

