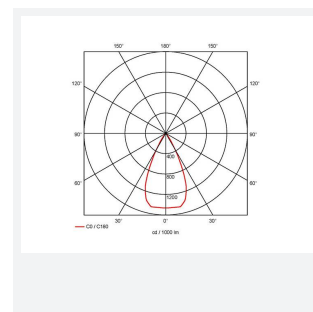
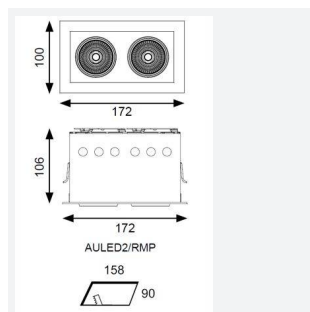
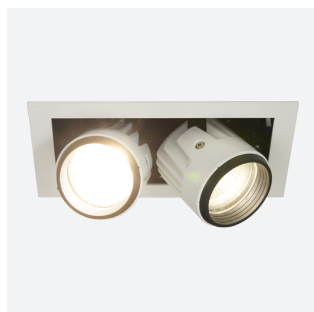




Unity S and R Retractable s

Unity Multi Pivot Twin 4000K Downlight
Code: AULED2/RMP

Category	Downlights
Application	Ancillary, Commercial, Education, Hospitality, Residential, Retail
Specification	Architectural



PRODUCT FEATURES

- Square and Rectangular recessed adjustable architectural downlight suitable for commercial, hospitality and retail applications
- Retractable head design allows for a range of installation applications
- Steel housing with die-cast aluminium body for excellent thermal management
- Dimmable options
- Full 360° head rotation and 90° tilting capability
- Black trim provides excellent glare control
- Remote driver with plug and play connection
- Powered by Tridonic

GENERAL INFORMATION

Wattage	30
Lumens Delivered	2 x 1000lm
Lm/W	73lm/W
Beam Angle	50
CRI	90
CCT	4000K
Input	220-240V
Operating Temp	-20°C - 25°C
SDCM	3
UGR	14
Cut-Out Size	90x158
Energy efficiency class	E
Product Weight without Packaging	1.49 kg

TECHNICAL INFORMATION

Light Source	LED
Colour / Finish	White
IP Rating	IP20
Class Protection	2
Internal / External	Internal
Surface / Recessed / Suspended	Recessed
Lumen Depreciation	L80 60,000h
Warranty (Years)	5
CE Mark	Yes
Height	106 mm

