



@ansell\_lighting



ansellighting



Ansell Lighting



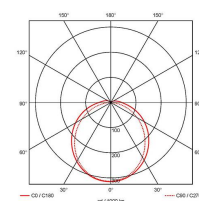
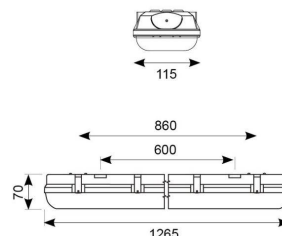
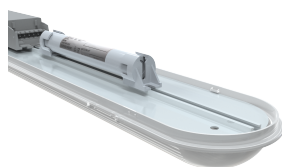
ansell\_lighting

# Tornado PRO

Tornado PRO Twin 1200mm Corridor Function

Code: ATORPLED2X4/CF

|               |   |
|---------------|---|
| Category      | Battens and Weatherproofs   |
| Application   | Ancillary, Commercial, Education, Healthcare, Hospitality, Industrial, Retail |
| Specification | Performance   |



- Ultra slim IP65 LED robust non-corrosive batten ideal for industrial applications and ancillary areas
- Unique base design caters for multiple installation methods
- Quick release LED array / gear tray assembly provides the installer the means to faster installation / maintenance
- Self-test emergency option with Li-ion battery technology, reducing charge time and running costs
- High efficiency up to 161 Lm/W
- Installer friendly embedded features aid accurate and fast installation for any application
- Fast latching / permanently located stainless steel side clips ensure a quick and secure connection
- High output 5ft options available

| GENERAL INFORMATION |              |
|---------------------|--------------|
| Wattage             | 41W          |
| Lumens Delivered    | 4500lm       |
| Lm/W                | 109lm/W      |
| Beam Angle          | 100/120      |
| CRI                 | 80           |
| CCT                 | 4000K        |
| Input               | 220-240V     |
| Operating Temp      | -10°C - 40°C |
| SDCM                | 3            |

| TECHNICAL INFORMATION          |                     |
|--------------------------------|---------------------|
| Light Source                   | LED                 |
| Colour / Finish                | Grey                |
| IP Rating                      | IP65                |
| Class Protection               | 1                   |
| Internal / External            | Internal / External |
| Surface / Recessed / Suspended | Ceiling, Suspended  |
| Lumen Depreciation             | L80 54,000h         |
| Warranty (Years)               | 7                   |
| CE Mark                        | Yes                 |
| Height                         | 70 mm               |

