



Twistlock

Part of the Downlights product category



Model	Twistlock GU10 Die-Cast Downlight Chrome
Code	ATLD/CH
Application	Hospitality, Residential, Retail

GENERAL INFORMATION

Input	220-240V
Wattage	35W
Operating Temp	0°C - 25°C

MATERIAL INFORMATION

Main Material	Aluminium
Product Weight without	0.114 kg
Packaging	
Colour / Finish	Chrome
Diameter	82 mm
Height	110 mm

TECHNICAL INFORMATION

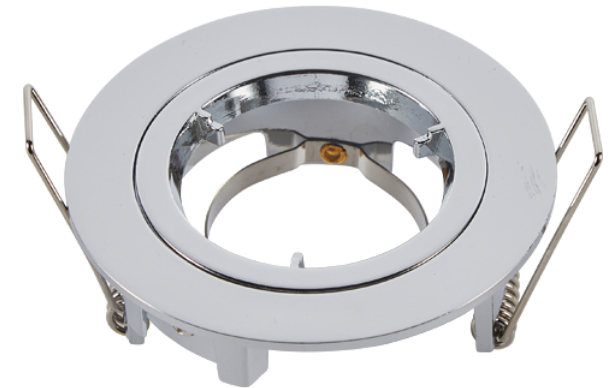
Class Protection	1
Light Source	GU10
Internal / External	Internal
Surface / Recessed / Suspended	Recessed

PRODUCT FEATURES

- GU10 die-cast downlight suitable for residential and hospitality applications (product supplied less lamp)
- Manufactured from high grade die-cast aluminium
- Permanent earth on stirrup bracket for GU10 mains earthing
- Generous size of terminal housing and 2x1.5mm, + CPC loop-in, loop-out push fit terminals provide an easy and efficient installation
- Option to add Bluetooth and WiFi enabled smart WIZ GU10 lamp

ACCESSORIES

ATL/BA	Twistlock GU10 Baffle Adaptor
--------	-------------------------------





Twistlock



Part of the Downlights product category

Model	Twistlock GU10 Die-Cast Downlight Chrome
Code	ATLD/CH
Application	Hospitality, Residential, Retail

