

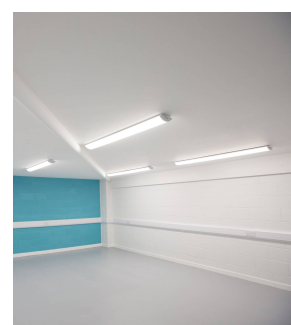


| | |
|----------------------|-----------------------------------|
| Category | Commercial Linear |
| Application | Commercial, Education, Healthcare |
| Specification | Performance |

Oxford

Oxford CCT Surface Linear Multi Wattage 1500mm Switch Dim

Code: AOXL5/1/DD1



PRODUCT FEATURES

- Surface linear suitable for educational and commercial applications
- This is a widely used style of fitting within the educational sector
- Steel body with polycarbonate diffuser and plastic end caps
- Powered by Philips
- Modern fully enclosed surface luminaire with curved low profile appearance
- CCT selectable between 3000K, 4000K and 5000K and power selectable; offering a choice of 2 outputs, in one luminaire
- Dimmable options

GENERAL INFORMATION

| | |
|---|-------------------------|
| Wattage | 38W |
| Lumens Delivered | 3100lm - 5400lm (4000K) |
| Lm/W | 140lm/W |
| Beam Angle | 110 |
| CRI | 80 |
| CCT | 3000/4000/5000K |
| Input | 220-240V |
| Operating Temp | -20°C - 40°C |
| SDCM | 3 |
| UGR | 24 |
| Energy efficiency class | C |
| Product Weight without Packaging | 2.41 kg |

TECHNICAL INFORMATION

| | |
|---------------------------------------|-------------|
| Light Source | LED |
| Colour / Finish | White |
| IP Rating | IP20 |
| IK Rating | IK06 |
| Class Protection | 1 |
| Internal / External | Internal |
| Surface / Recessed / Suspended | Ceiling |
| Lumen Depreciation | L70 80,000h |
| Warranty (Years) | 5 |
| CE Mark | Yes |
| Height | 70 mm |



| | |
|---------------|-----------------------------------|
| Category | Commercial Linear |
| Application | Commercial, Education, Healthcare |
| Specification | Performance |

Oxford

Oxford CCT Surface Linear Multi Wattage 1500mm Switch Dim

Code: AOXL5/1/DD1

