

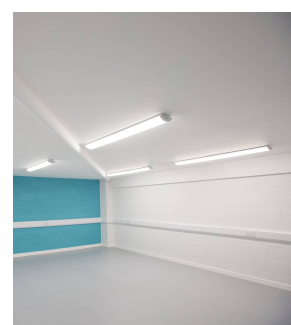


Category	Commercial Linear
Application	Commercial, Education, Healthcare
Specification	Performance

Oxford

Oxford CCT Surface Linear Multi Wattage 1200mm

Code: AOXL4/1



PRODUCT FEATURES

- Surface linear suitable for educational and commercial applications
- This is a widely used style of fitting within the educational sector
- Steel body with polycarbonate diffuser and plastic end caps
- Powered by Philips
- Modern fully enclosed surface luminaire with curved low profile appearance
- CCT selectable between 3000K, 4000K and 5000K and power selectable; offering a choice of 2 outputs, in one luminaire
- Dimmable options

GENERAL INFORMATION

Wattage	21W - 32W
Lumens Delivered	2900lm - 5000lm (4000K)
Lm/W	140lm/W
Beam Angle	110
CRI	80
CCT	3000/4000/5000K
Input	220-240V
Operating Temp	-20°C - 40°C
SDCM	3
UGR	24
Energy efficiency class	C
Product Weight without Packaging	1.8 kg

TECHNICAL INFORMATION

Light Source	LED
Colour / Finish	White
IP Rating	IP20
IK Rating	IK06
Class Protection	1
Internal / External	Internal
Surface / Recessed / Suspended	Ceiling
Lumen Depreciation	L70 80,000h
Warranty (Years)	5
CE Mark	Yes
Height	70 mm



Category	Commercial Linear
Application	Commercial, Education, Healthcare
Specification	Performance

Oxford

Oxford CCT Surface Linear Multi Wattage 1200mm

Code: AOXL4/1

