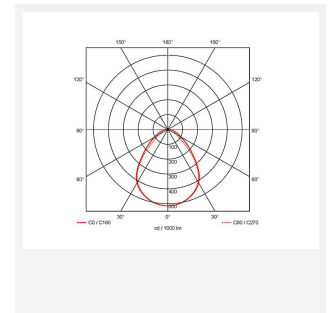
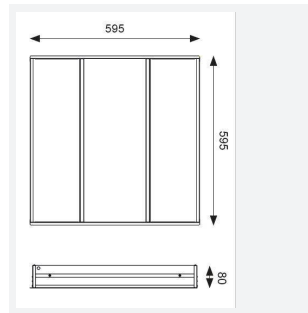
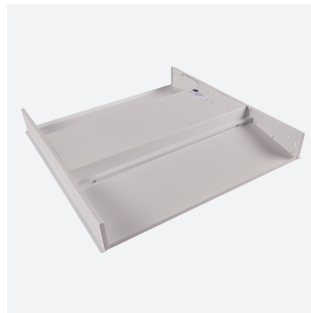




Lota

Lota CCT Recessed Modular DSI Emergency
Code: ALOTLED/DD2/M3

Category	Commercial Panels
Application	Commercial, Education, Healthcare
Specification	Performance



PRODUCT FEATURES

- Recessed luminaire suitable for educational or commercial applications
- Selectable CCT between 3000K, 4000K and 6000K output
- TP(a) as Standard
- UGR<19 (unified glare rating) compliant luminaire ideal for most interior
- Powder coated steel construction

GENERAL INFORMATION	
Wattage	31W
Lumens Delivered	3200lm (4000K)
Lm/W	110lm/W (4000K)
Beam Angle	85
CRI	80
CCT	3000/4000/6500K
Input	220-240V
Operating Temp	0°C - 40°C
SDCM	6
UGR	17
Cut-Out Size	575x575mm
Product Weight without Packaging	0.01 kg

TECHNICAL INFORMATION	
Light Source	LED
Colour / Finish	White
IP Rating	IP20
Class Protection	2
Internal / External	Internal
Surface / Recessed / Suspended	Recessed
Lumen Depreciation	L80 54,000h
Warranty (Years)	5
CE Mark	Yes
Height	80 mm

