



Hawk



Part of the Emergency product category



Model Hawk Universal Lithium Emergency Kit Maintained/Non-maintained
Code AHUEMKIT/LI
Application Commercial, Education, Healthcare, Hospitality, Retail

GENERAL INFORMATION

Input 220-240V
Operating Temp 0°C - 40°C

MATERIAL INFORMATION

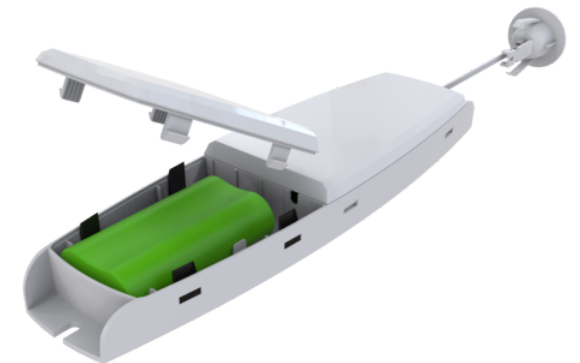
Product Weight without 0.381 kg
Packaging
Colour / Finish White
Height 25 mm

TECHNICAL INFORMATION

Class Protection 1
Internal / External Internal

PRODUCT FEATURES

- Ultra-slim universal self-test emergency converter pack for LED luminaires
- Supplied c/w recessed LED indicator housing
- Ideal for most LED panels, Downlights and Linear products
- Compatible for LED luminaires with separate LED driver (Maximum 60V Forward Voltage)
- LiFePO4 Lithium battery provides improved energy consumption, product reliability and lifetime





Hawk



Part of the Emergency product category

Model	Hawk Universal Lithium Emergency Kit Maintained/Non-maintained
Code	AHUEMKIT/LI
Application	Commercial, Education, Healthcare, Hospitality, Retail

