

Category	Feature Lighting
Application	Commercial, Education, Healthcare, Hospitality, Outdoor, Residential, Retail
Specification	Architectural

Fresno

Fresno Adjustable Inground 270mm Warm White

Code: AFRWOLED/270



PRODUCT FEATURES

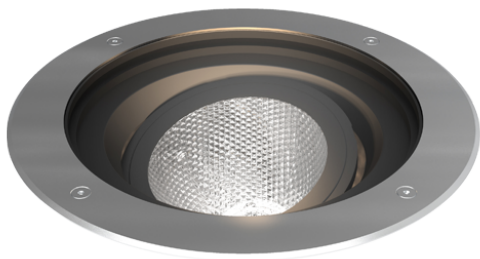
- High performance LED adjustable inground uplight suitable for commercial and hospitality applications
- Supplied c/w installation housing for additional protection and ease of installation
- Static load test to 2000kg; suitable for vehicular and pedestrian traffic
- 304L stainless steel bezel and powder coated aluminium housing
- Integral driver and pre-wired with 2 metres of rubber insulated cable
- Non-dimmable

GENERAL INFORMATION

Wattage	30W
Lumens Delivered	1800lm
Lm/W	59lm/W
Beam Angle	20
CRI	80
CCT	3000K
Input	220-240V
Operating Temp	-20°C - 40°C
SDCM	3
Product Weight without Packaging	6.69 kg

TECHNICAL INFORMATION

Light Source	LED
Colour / Finish	Stainless Steel
IP Rating	IP67
IK Rating	IK10
Class Protection	1
Internal / External	External
Surface / Recessed / Suspended	Recessed
Lumen Depreciation	L80 50,000h
Warranty (Years)	5
CE Mark	Yes
Diameter	270 mm



Category	Feature Lighting
Application	Commercial, Education, Healthcare, Hospitality, Outdoor, Residential, Retail
Specification	Architectural

Fresno

Fresno Adjustable Inground 270mm Warm White

Code: AFRWOLED/270

