



Edge



Part of the Downlights product category

Model	Edge GU10 Fire Rated Downlight Satin Chrome
Code	AEFRD/SC
Application	Hospitality, Residential, Retail

GENERAL INFORMATION

Input	220-240V
Wattage	50W
Operating Temp	0°C - 25°C

MATERIAL INFORMATION

Main Material	Iron
Product Weight without	0.176 kg
Packaging	
Colour / Finish	Satin Chrome
Diameter	90 mm
Height	105 mm

TECHNICAL INFORMATION

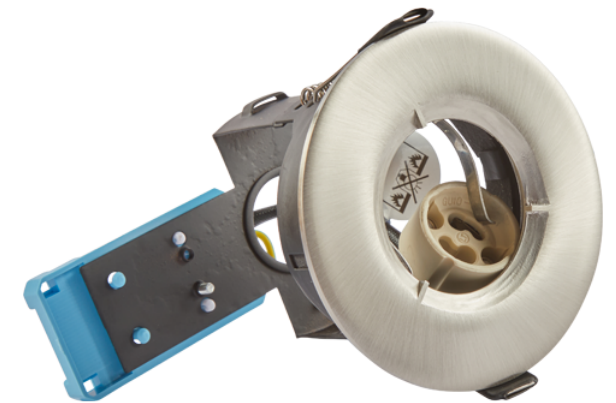
Class Protection	1
Light Source	GU10
Internal / External	Internal
Surface / Recessed / Suspended	Recessed

PRODUCT FEATURES

- Compact Fire Rated downlight for shallow ceiling voids suitable for residential and hospitality applications (product supplied less lamp)
- Suitable for standard GU10 halogen or LED lamps
- Protective sheathing spring clips for ease of installation and ceiling protection
- Push fit terminals for fast loop-in, loop-out wiring
- Twistlock lamp retaining ring for ease of lamp replacement

ACCESSORIES

AEFRISD	Edge GU10 IP65 Fire Rated Downlight Insulation Support
---------	--





Edge



Part of the Downlights product category



Model Edge GU10 Fire Rated Downlight Satin Chrome

Code AEFRD/SC

Application Hospitality, Residential, Retail

