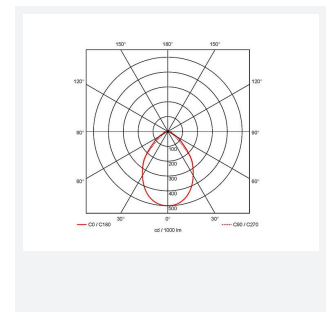
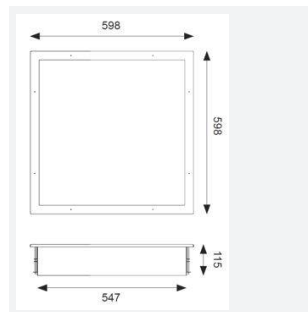
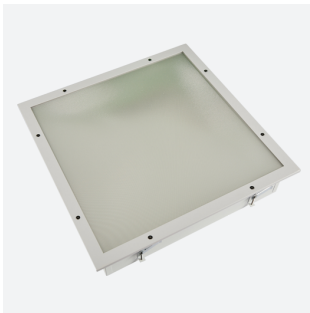


# Defender

**Category** Commercial Panels

**Application** Ancillary, Commercial, Education, Healthcare, Industrial

**Code:** ADELED/M3



- Backlit clean air LED panel suitable for education, commercial and healthcare applications
- Selectable CCT between 4000K and 6500K output
- Powered by Tridonic
- High quality steel housing with welded frame and secured by Easy Fix style brackets
- Frame fitted with TP(a) rated diffuser providing excellent diffusion and outstanding light transmission

## GENERAL INFORMATION

Wattage	20W - 33W
Lumens Delivered	2800lm - 4500lm (4000K)
Lm/W	141lm/w - 135lm/W (4000K)
Beam Angle	110
CRI	80
CCT	4000/6500K
Input	220-240V
Operating Temp	0°C - 50°C
SDCM	3
UGR	17

## TECHNICAL INFORMATION

Light Source	LED
Colour / Finish	White
IP Rating	IP65
Class Protection	1
Internal / External	Internal
Surface / Recessed / Suspended	Recessed
Lumen Depreciation	L70 80,000h
Warranty (Years)	5
CE Mark	Yes
Height	115 mm

