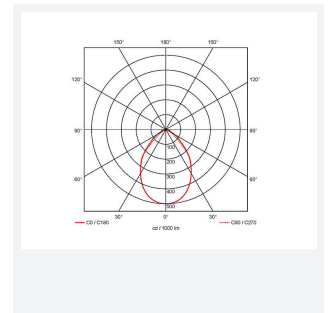
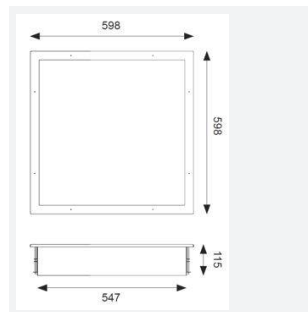
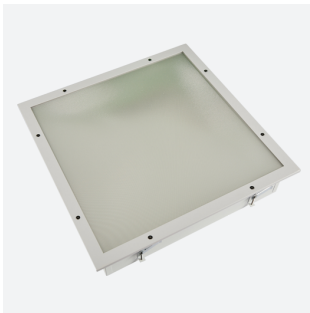


Defender

Category Commercial Panels

Application Ancillary, Commercial, Education, Healthcare, Industrial

Code: ADELED/DM3



- Backlit clean air LED panel suitable for education, commercial and healthcare applications
- Selectable CCT between 4000K and 6500K output
- Powered by Tridonic
- High quality steel housing with welded frame and secured by Easy Fix style brackets
- Frame fitted with TP(a) rated diffuser providing excellent diffusion and outstanding light transmission

GENERAL INFORMATION

| | |
|------------------|---------------------------|
| Wattage | 20W - 33W |
| Lumens Delivered | 2800lm - 4500lm (4000K) |
| Lm/W | 141lm/w - 135lm/W (4000K) |
| Beam Angle | 110 |
| CRI | 80 |
| CCT | 4000/6500K |
| Input | 220-240V |
| Operating Temp | 0°C - 50°C |
| SDCM | 3 |
| UGR | 17 |

TECHNICAL INFORMATION

| | |
|--------------------------------|-------------|
| Light Source | LED |
| Colour / Finish | White |
| IP Rating | IP65 |
| Class Protection | 1 |
| Internal / External | Internal |
| Surface / Recessed / Suspended | Recessed |
| Lumen Depreciation | L70 80,000h |
| Warranty (Years) | 5 |
| CE Mark | Yes |
| Height | 115 mm |

