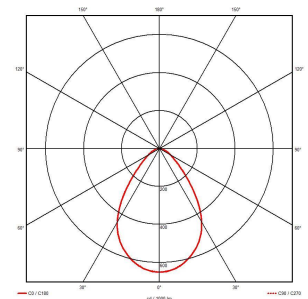
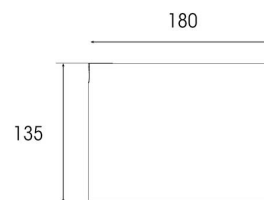
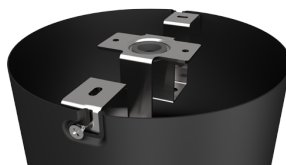


# Comfort EVO Surface Mounted

Comfort EVO 1 Surface Mounted DALI Black  
Code: ACOM1/1/SMF/B/DD3

|               |   |
|---------------|---|
| Category      | Downlights  |
| Application   | Ancillary, Commercial, Education, Healthcare, Hospitality |
| Specification | Performance   |



- Economic high performance CCT selectable surface IP44 downlight suitable for commercial and healthcare applications
- CCT selectable between 3000K and 4000K and power selectable; offering a choice of 2 outputs, in one luminaire
- Polycarbonate housing with unique thermal management for durability and optimum lifespan
- Please note: Reflector and trim parts (ACOM/TR/\*/\*) are not required for installation with this kit
- Deep cut-off angle for glare control and comfort
- Available in black or white finishes
- Dimmable options available
- Please note: Hawk Emergency Kit cannot be used in conjunction with this downlight

| GENERAL INFORMATION              |                         |
|----------------------------------|-------------------------|
| Wattage                          | 13W                     |
| Lumens Delivered                 | 1000lm - 1800lm (4000K) |
| Lm/W                             | 130lm/W (4000K)         |
| Beam Angle                       | 80                      |
| CRI                              | 80                      |
| CCT                              | 3000K/4000K             |
| Input                            | 220-240V                |
| Operating Temp                   | -20°C - 25°C            |
| SDCM                             | 3                       |
| UGR                              | 23                      |
| Energy efficiency class          | F                       |
| Product Weight without Packaging | 0.23 kg                 |

| TECHNICAL INFORMATION          |                 |
|--------------------------------|-----------------|
| Light Source                   | LED             |
| Colour / Finish                | Black           |
| IP Rating                      | IP44            |
| Class Protection               | 2               |
| Internal / External            | Internal        |
| Surface / Recessed / Suspended | Surface         |
| Lumen Depreciation             | L80 B10 60,000h |
| Warranty (Years)               | 5               |
| CE Mark                        | Yes             |
| Diameter                       | 180 mm          |
| Height                         | 135 mm          |

