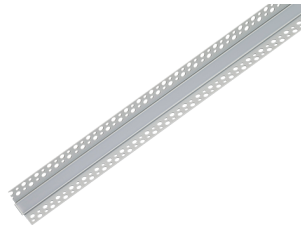
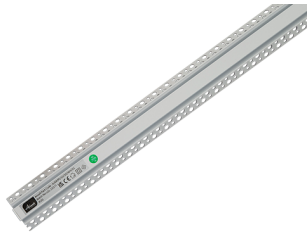


| | |
|---------------|----------------------------------|
| Category | LED Strip |
| Application | Hospitality, Residential, Retail |
| Specification | Architectural |

2m Plaster In Inside Corner Profile IP20 White

2m Plaster In Inside Corner Profile IP20 White

Code: A/AP/PI/10/20/WH/01



PRODUCT FEATURES

- LED Strip Profile
- Please note mounting clips, end caps and opal diffuser are included as standard.

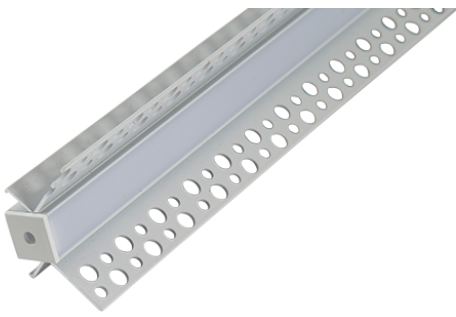
GENERAL INFORMATION

| | |
|----------------------------------|-----|
| Product Weight without Packaging | 0.6 |
|----------------------------------|-----|

TECHNICAL INFORMATION

| | |
|--------------------------------|----------|
| Colour / Finish | White |
| IP Rating | IP20 |
| Internal / External | Internal |
| Surface / Recessed / Suspended | Recessed |
| Height | 26 mm |





| | |
|---------------|----------------------------------|
| Category | LED Strip |
| Application | Hospitality, Residential, Retail |
| Specification | Architectural |

2m Plaster In Inside Corner Profile IP20 White

2m Plaster In Inside Corner Profile IP20 White

Code: A/AP/PI/10/20/WH/01

ACCESSORIES

| | |
|---------------------|---|
| A/EC/PI/10/20/WH/01 | End Cap w/o hole for Plaster In Inside Corner Profile IP20 White |
| A/EH/PI/10/20/WH/01 | End Cap with hole for Plaster In Inside Corner Profile IP20 White |
| A/DI/PI/01/20/OP/01 | 2m Diffuser for Plaster In Profiles IP20 Opal |
| A/DI/PI/01/20/CL/01 | 2m Diffuser for Plaster In Profiles IP20 Clear |
| A/DI/PI/01/20/BL/01 | 2m Diffuser for Plaster In Profiles IP20 Black |

