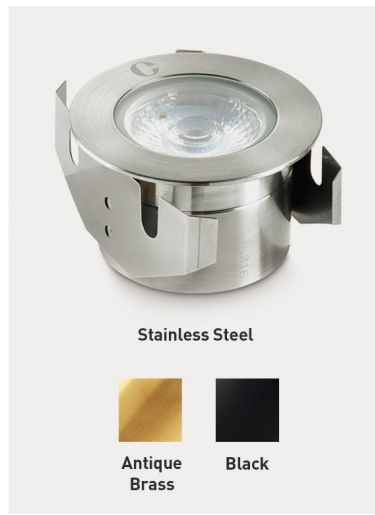


IP68 IP68 perfect for internal or external applications

 Coastal protected

IK08 IK08 impact protection - walk over (Stainless Steel only)



Stainless Steel



Antique Brass



Black

GL040 ROUND

Round Ground Light

FEATURES

IP rating	IP68
IK rating	IK08
CSP Switchable	Single CCT
Tilttable (°)	Fixed
LED Lifetime	L70 70,000h
Colour Rendering Index	CRI>80
Colour Consistency	SDCM3
Walk Over / Drive Over	Walk over

INSTALLATION INFORMATION

Input	150mA / 250mA / 350mA / 500mA / 700mA DC
Maximum Ambient Temperature	55°C
Weight	GL040AB: 590g, GL040BK: 310g, GL040SS: 550g
Inrush Current	N/A
Cut Out Size	70mm
Construction Material	Antique Brass
UK Bathroom Zone	0
SELV	N/A
Electric Class (1, 2, 3)	III
Earth Leakage	N/A
Suitable for coastal areas	Yes






WARRANTY

Warranty 7 years

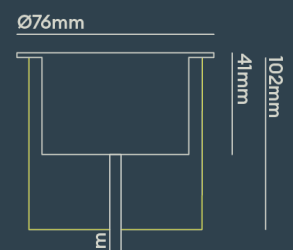
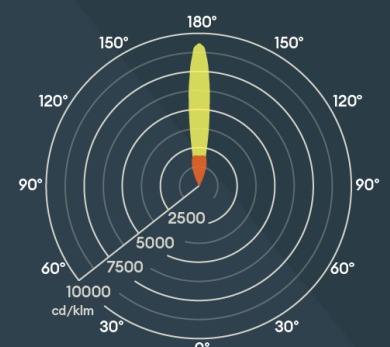
FEATURES & BENEFITS

- Supplied complete with installation tube
- SDCM3 ensuring uniform light appearance and consistency
- Single LED and lens combination for maximum efficiency and optimal light distribution
- CRI 80 providing true colour appearance
- Available in a new 2200K setting to create a warm and cosy environment with minimal disruption to natural habitat
- Long lifetime of 70,000hrs
- Available in an array of colours

Photometrics @ 25°C

Product Code	Finish	Beam	W	Colour	lm	lm/W	Energy
GL040RSS22F	Stainless steel 316	40°	0.8W (150mA)	2200K	108	135	
			1.4W (250mA)	2200K	174	124	
			2W (350mA)	2200K	249	124	
			3W (500mA)	2200K	332	111	
			4.6W (700mA)	2200K	431	94	
GL040RSS27F	Stainless steel 316	40°	0.8W (150mA)	2700K	129	161	
			1.4W (250mA)	2700K	208	149	
			2W (350mA)	2700K	297	149	
			3W (500mA)	2700K	363	132	
			4.6W (700mA)	2700K	515	112	
GL040RSS30F	Stainless steel 316	40°	0.8W (150mA)	3000K	130	163	
			1.4W (250mA)	3000K	210	150	
			2W (350mA)	3000K	300	150	
			3W (500mA)	3000K	400	133	
			4.6W (700mA)	3000K	520	113	
GL040RSS40F	Stainless steel 316	40°	0.8W (150mA)	4000K	134	168	
			1.4W (250mA)	4000K	134	134	
			2W (350mA)	4000K	310	155	
			3W (500mA)	4000K	414	138	
			4.6W (700mA)	4000K	538	117	
GL040RAB22S	Antique brass	12°	0.8W (150mA)	2200K	108	135	
			1.4W (250mA)	2200K	174	124	
			2W (350mA)	2200K	249	124	
			3W (500mA)	2200K	332	111	
			4.6W (700mA)	2200K	431	94	

BEAM ANGLE: 12°



The newly upgraded GL040 modular ground light range offers a variety of options, including round, frosted, low glare, half moon, and ultra low glare, to suit any installation or project. This range features a single-point source lens, giving it a modern appearance and feel. With IP68 and IK08 ratings, it is ideal for outdoor use. These ground lights are a stunning way to illuminate walls, trees, and walkways.

GL040RAB27S	Antique brass	12°	0.8W (150mA)	2700K	129	161	
			1.4W (250mA)	2700K	208	149	
			2W (350mA)	2700K	297	149	
			3W (500mA)	2700K	363	132	
			4.6W (700mA)	2700K	515	112	
GL040RAB30S	Antique brass	12°	0.8W (150mA)	3000K	130	163	
			1.4W (250mA)	3000K	210	150	
			2W (350mA)	3000K	300	150	
			3W (500mA)	3000K	400	133	
			4.6W (700mA)	3000K	520	113	
GL040RAB40S	Antique brass	12°	0.8W (150mA)	4000K	134	168	
			1.4W (250mA)	4000K	134	134	
			2W (350mA)	4000K	310	155	
			3W (500mA)	4000K	414	138	
			4.6W (700mA)	4000K	538	117	
GL040RAB22F	Antique brass	40°	0.8W (150mA)	2200K	108	135	
			1.4W (250mA)	2200K	174	124	
			2W (350mA)	2200K	249	124	
			3W (500mA)	2200K	332	111	
			4.6W (700mA)	2200K	431	94	
GL040RAB27F	Antique brass	40°	0.8W (150mA)	2700K	129	161	
			1.4W (250mA)	2700K	208	149	
			2W (350mA)	2700K	297	149	
			3W (500mA)	2700K	363	132	
			4.6W (700mA)	2700K	515	112	
GL040RAB30F	Antique brass	40°	0.8W (150mA)	3000K	130	163	
			1.4W (250mA)	3000K	210	150	
			2W (350mA)	3000K	300	150	
			3W (500mA)	3000K	400	133	
			4.6W (700mA)	3000K	520	113	
GL040RAB40F	Antique brass	40°	0.8W (150mA)	4000K	134	168	
			1.4W (250mA)	4000K	134	134	
			2W (350mA)	4000K	310	155	
			3W (500mA)	4000K	414	138	
			4.6W (700mA)	4000K	538	117	
GL040RBK22S	Black	12°	0.8W (150mA)	2200K	108	135	
			1.4W (250mA)	2200K	174	124	
			2W (350mA)	2200K	249	124	
			3W (500mA)	2200K	332	111	
			4.6W (700mA)	2200K	431	94	
GL040RBK27S	Black	12°	0.8W (150mA)	2700K	129	161	
			1.4W (250mA)	2700K	208	149	
			2W (350mA)	2700K	297	149	
			3W (500mA)	2700K	363	132	
			4.6W (700mA)	2700K	515	112	
GL040RBK30S	Black	12°	0.8W (150mA)	3000K	130	163	
			1.4W (250mA)	3000K	210	150	
			2W (350mA)	3000K	300	150	
			3W (500mA)	3000K	400	133	
			4.6W (700mA)	3000K	520	113	
GL040RBK40S	Black	12°	0.8W (150mA)	4000K	134	168	
			1.4W (250mA)	4000K	134	134	
			2W (350mA)	4000K	310	155	
			3W (500mA)	4000K	414	138	

Energy rating is a reflection of the LED light source.

4.6W (700mA)

4000K

538

117

WIRING INFORMATION

Cable / Flying Lead	1m (H05RN-F) rubberised cable (outside diameter: 6mm)
Type of Wiring Required	Series

LED DRIVER

Driver	Input	SELV	Dimming	Bathroom Zone
DRV150700 (all settings)	220-240V	Yes	No	N/A
DRV350700TD (700mA)	220-240V	Yes	Yes	N/A
PSMD70024	220-240V	Yes	Yes	N/A

ACCESSORIES

JB2 / JB4 / JB6	IP68 waterproof connectors	Sold Separately
WCR 275 BLACK	2-core rubber cable	Sold Separately



COLLINGWOOD
LIGHTING

LIGHTING INNOVATION

The newly upgraded GL040 modular ground light range offers a variety of options, including round, frosted, low glare, half moon, and ultra low glare, to suit any installation or project. This range features a single-point source lens, giving it a modern appearance and feel. With IP68 and IK08 ratings, it is ideal for outdoor use. These ground lights are a stunning way to illuminate walls, trees, and walkways.