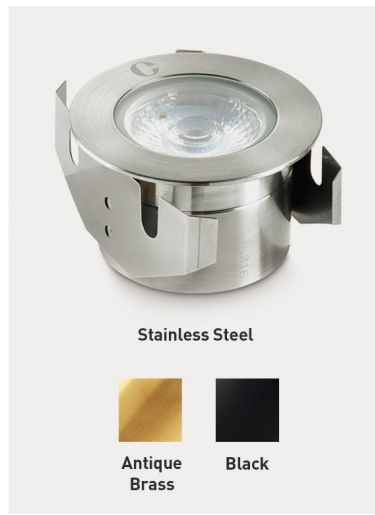


IP68 IP68 perfect for internal or external applications

 Coastal protected

IK08 IK08 impact protection - walk over (Stainless Steel only)



Stainless Steel



Antique Brass



Black

GL040 ROUND

Round Ground Light

FEATURES

IP rating	IP68
IK rating	IK08
CSP Switchable	Single CCT
Tilttable (°)	Fixed
LED Lifetime	L70 70,000h
Colour Rendering Index	CRI>80
Colour Consistency	SDCM3
Walk Over / Drive Over	Walk over

INSTALLATION INFORMATION

Input	150mA / 250mA / 350mA / 500mA / 700mA DC
Maximum Ambient Temperature	55°C
Weight	GL040AB: 590g, GL040BK: 310g, GL040SS: 550g
Inrush Current	N/A
Cut Out Size	70mm
Construction Material	Stainless Steel
UK Bathroom Zone	0
SELV	N/A
Electric Class (1, 2, 3)	III
Earth Leakage	N/A
Suitable for coastal areas	Yes






WARRANTY

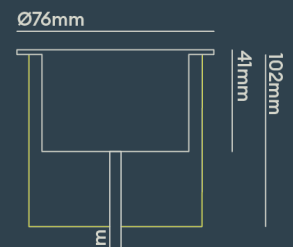
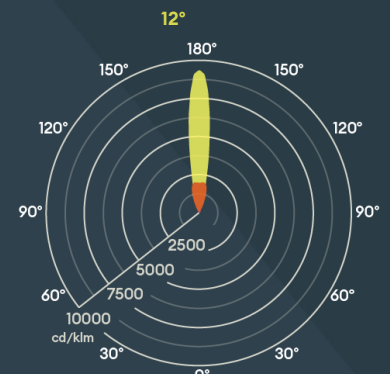
Warranty 7 years

FEATURES & BENEFITS

- Supplied complete with installation tube
- SDCM3 ensuring uniform light appearance and consistency
- Single LED and lens combination for maximum efficiency and optimal light distribution
- CRI 80 providing true colour appearance
- Available in a new 2200K setting to create a warm and cosy environment with minimal disruption to natural habitat
- Long lifetime of 70,000hrs
- Available in an array of colours

Photometrics @ 25°C

Product Code	Finish	Beam	W	Colour	lm	lm/W	Energy
GL040RSS22S	Stainless steel 316	12°	0.8W (150mA)	2200K	108	135	
			1.4W (250mA)	2200K	174	124	
			2W (350mA)	2200K	249	124	
			3W (500mA)	2200K	332	111	
			4.6W (700mA)	2200K	431	94	
GL040RSS27S	Stainless steel 316	12°	0.8W (150mA)	2700K	129	161	
			1.4W (250mA)	2700K	208	149	
			2W (350mA)	2700K	297	149	
			3W (500mA)	2700K	363	132	
			4.6W (700mA)	2700K	515	112	
GL040RSS30S	Stainless steel 316	12°	0.8W (150mA)	3000K	130	163	
			1.4W (250mA)	3000K	210	150	
			2W (350mA)	3000K	300	150	
			3W (500mA)	3000K	400	133	
			4.6W (700mA)	3000K	520	113	
GL040RSS40S	Stainless steel 316	12°	0.8W (150mA)	4000K	134	168	
			1.4W (250mA)	4000K	134	134	
			2W (350mA)	4000K	310	155	
			3W (500mA)	4000K	414	138	
			4.6W (700mA)	4000K	538	117	
GL040RSS22F	Stainless steel 316	40°	0.8W (150mA)	2200K	108	135	
			1.4W (250mA)	2200K	174	124	
			2W (350mA)	2200K	249	124	
			3W (500mA)	2200K	332	111	
			4.6W (700mA)	2200K	431	94	



The newly upgraded GL040 modular ground light range offers a variety of options, including round, frosted, low glare, half moon, and ultra low glare, to suit any installation or project. This range features a single-point source lens, giving it a modern appearance and feel. With IP68 and IK08 ratings, it is ideal for outdoor use. These ground lights are a stunning way to illuminate walls, trees, and walkways.

GL040RSS27F	Stainless steel 316	40°	0.8W (150mA)	2700K	129	161	
			1.4W (250mA)	2700K	208	149	
			2W (350mA)	2700K	297	149	
			3W (500mA)	2700K	363	132	
			4.6W (700mA)	2700K	515	112	
GL040RSS30F	Stainless steel 316	40°	0.8W (150mA)	3000K	130	163	
			1.4W (250mA)	3000K	210	150	
			2W (350mA)	3000K	300	150	
			3W (500mA)	3000K	400	133	
			4.6W (700mA)	3000K	520	113	
GL040RSS40F	Stainless steel 316	40°	0.8W (150mA)	4000K	134	168	
			1.4W (250mA)	4000K	134	134	
			2W (350mA)	4000K	310	155	
			3W (500mA)	4000K	414	138	
			4.6W (700mA)	4000K	538	117	
GL040RAB22S	Antique brass	12°	0.8W (150mA)	2200K	108	135	
			1.4W (250mA)	2200K	174	124	
			2W (350mA)	2200K	249	124	
			3W (500mA)	2200K	332	111	
			4.6W (700mA)	2200K	431	94	
GL040RAB27S	Antique brass	12°	0.8W (150mA)	2700K	129	161	
			1.4W (250mA)	2700K	208	149	
			2W (350mA)	2700K	297	149	
			3W (500mA)	2700K	363	132	
			4.6W (700mA)	2700K	515	112	
GL040RAB30S	Antique brass	12°	0.8W (150mA)	3000K	130	163	
			1.4W (250mA)	3000K	210	150	
			2W (350mA)	3000K	300	150	
			3W (500mA)	3000K	400	133	
			4.6W (700mA)	3000K	520	113	
GL040RAB40S	Antique brass	12°	0.8W (150mA)	4000K	134	168	
			1.4W (250mA)	4000K	134	134	
			2W (350mA)	4000K	310	155	
			3W (500mA)	4000K	414	138	
			4.6W (700mA)	4000K	538	117	
GL040RAB22F	Antique brass	40°	0.8W (150mA)	2200K	108	135	
			1.4W (250mA)	2200K	174	124	
			2W (350mA)	2200K	249	124	
			3W (500mA)	2200K	332	111	
			4.6W (700mA)	2200K	431	94	
GL040RAB27F	Antique brass	40°	0.8W (150mA)	2700K	129	161	
			1.4W (250mA)	2700K	208	149	
			2W (350mA)	2700K	297	149	
			3W (500mA)	2700K	363	132	
			4.6W (700mA)	2700K	515	112	
GL040RAB30F	Antique brass	40°	0.8W (150mA)	3000K	130	163	
			1.4W (250mA)	3000K	210	150	
			2W (350mA)	3000K	300	150	
			3W (500mA)	3000K	400	133	
			4.6W (700mA)	3000K	520	113	
GL040RAB40F	Antique brass	40°	0.8W (150mA)	4000K	134	168	
			1.4W (250mA)	4000K	134	134	
			2W (350mA)	4000K	310	155	
			3W (500mA)	4000K	414	138	

WIRING INFORMATION

4.6W (700mA) 4000K 538 117

Cable / Flying Lead	1m (H05RN-F) rubberised cable (outside diameter: 6mm)
Type of Wiring Required	Series

LED DRIVER

Driver	Input	SELV	Dimming	Bathroom Zone
DRV150700 (all settings)	220-240V	Yes	No	N/A
DRV350700TD (700mA)	220-240V	Yes	Yes	N/A
PSMD70024	220-240V	Yes	Yes	N/A

ACCESSORIES

JB2 / JB4 / JB6	IP68 waterproof connectors	Sold Separately
WCR 275 BLACK	2-core rubber cable	Sold Separately



COLLINGWOOD
LIGHTING

LIGHTING INNOVATION

The newly upgraded GL040 modular ground light range offers a variety of options, including round, frosted, low glare, half moon, and ultra low glare, to suit any installation or project. This range features a single-point source lens, giving it a modern appearance and feel. With IP68 and IK08 ratings, it is ideal for outdoor use. These ground lights are a stunning way to illuminate walls, trees, and walkways.