

87500770 TRIDONIC LC 60W 1400MA FIXC SC SNC2

PRD-70-10-60



**Key Data**

Power	60W
Dimensions	130 x 43 x 30mm

**NET LED Lighting**

Buckingway Business Park, 300 Anderson Road,  
Swavesey, Cambridge, CB24 4UQ

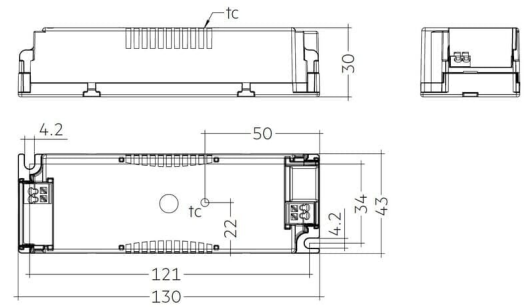
T: 01223 851505 | [sales@netled.co.uk](mailto:sales@netled.co.uk) | [www.netled.co.uk](http://www.netled.co.uk)



**ORDER BY 6PM**  
FOR NEXT DAY DELIVERY

## Technical Specifications

Input Voltage (AC)	220-240V
Operating Temp.	-25°C to +50°C
Manufacturer	Tridonic
Housing Colour	White



## Other Options

Description	
PRD-70-10-01	28000664 Tridonic LCA 17W 250-700mA one4one C PRE
PRD-70-10-02	28000660 Tridonic LC 75W 900-1800mA one4all Ip PRE
PRD-70-10-06	87500729 Tridonic LC 15W 350mA fixC SC SNC2
PRD-70-10-07	28000665 Tridonic LCA 25W 350-1050mA one4all C PRE
PRD-70-10-30	28002413 Tridonic LC 25W 350-1050mA bDW SC PRE2
PRD-70-10-32	28002414 Tridonic LC 45W 500-1400mA bDW SC PRE2
PRD-70-10-39	87500750 Tridonic LC 25W 350mA fixC SR SNC2
PRD-70-10-44	87500783 Tridonic LC 75W 1400mA fixC Ip SNC2
PRD-70-10-45	87500779 Tridonic LC 19W 350mA fixC Ip SNC2
PRD-70-10-51	28002476 Tridonic LC 25W 350-600mA flexC SC ADV

## NET LED Lighting

Buckingham Business Park, 300 Anderson Road,  
Swavesey, Cambridge, CB24 4UQ



**ORDER BY 6PM**  
FOR NEXT DAY DELIVERY

T: 01223 851505 | [sales@netled.co.uk](mailto:sales@netled.co.uk) | [www.netled.co.uk](http://www.netled.co.uk)