

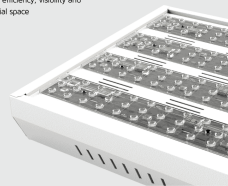
PAXTON LED BAY 4000K 134W NARROW BEAM OPTIC STANDARD

NET-55-12-25



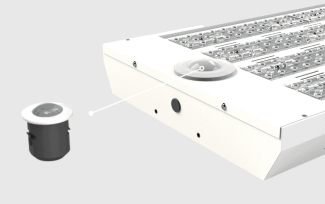
High Rack, Wide and Narrow optical lenses available

Direct your light precisely where it's needed, providing maximum efficiency, visibility and safety in any industrial space



Integral PIR and Daylight Harvesting Sensor

Automatically regulates the fitting's light output and maintains the required light levels



Features & Benefits

- Narrow Beam optical lens
- Daylight Harvesting as Standard regulates the light output and maintains the required lighting levels
- Powder coated housing
- Single colour temperature 4000K
- IK10 rated housing

Key Data

Power	134W
Luminous Flux	21000lm
Colour Temperature	4000K
IP Rating	IP20
IK Rating	IK10
Dimensions	695 x 300 x 80mm
Warranty	5 Years (Registration Required)

NET LED Lighting

Buckingway Business Park, 300 Anderson Road,
Swavesey, Cambridge, CB24 4UQ

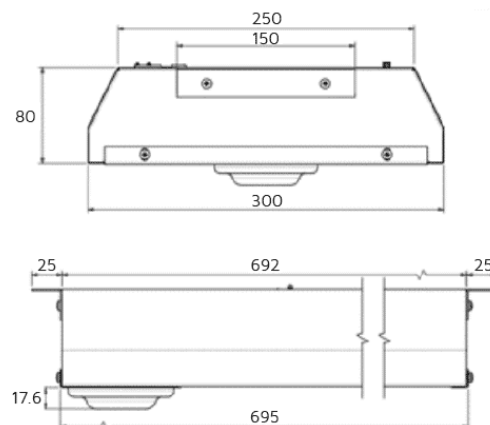
T: 01223 851505 | sales@netled.co.uk | www.netled.co.uk



ORDER BY 6PM
FOR NEXT DAY DELIVERY

Technical Specifications

Input Voltage (AC)	220-240V
Power Factor	>0.9
Luminaire Efficacy	156lm/W
LED Manufacturer	Philips
LED Type	Fortimo LED Line 1ft 2000lm 840 3R HV4
No. of LEDs	264
Driver Manufacturer	Philips
Driver Output Voltage (DC)	100-300V
Total Circuit Power (W)	134W
Electrical Class	1
Colour Rendering	>80 CRI
Lamp Viewing Angle	Narrow
Dimmable	Yes
Operating Temp.	-20°C to +30°C
Lifespan LM80	50,000 Hours
UGR Rating	More than 22
Weight	5Kg
Manufacturer	LuxUltra Lighting
Housing Colour	White
Housing Material	Steel
Diffuser Material	Polycarbonate
Dimming Input Type	Daylight Harvesting



Other Options

Description	
NET-55-12-01	Paxton LED Bay 4000K 134W Wide Optic Standard
NET-55-12-07	Paxton LED Bay 4000K 134W Wide Optic Emergency
NET-55-12-13	Paxton LED Bay 4000K 134W High Rack Optic Standard
NET-55-12-19	Paxton LED Bay 4000K 134W High Rack Optic Emergency
NET-55-12-25	Paxton LED Bay 4000K 134W Narrow Beam Optic Standard
NET-55-12-31	Paxton LED Bay 4000K 134W Narrow Beam Optic Emergency

NET LED Lighting

Buckingham Business Park, 300 Anderson Road,
Swavesey, Cambridge, CB24 4UQ



ORDER BY 6PM
FOR NEXT DAY DELIVERY

T: 01223 851505 | sales@netled.co.uk | www.netled.co.uk

Up to
155
lm/W

INTEGRAL PIR AND DAYLIGHT HARVESTING SENSOR

Automatically regulates the fitting's light output and maintains the required light levels

IK10 POWDER COATED HOUSING

Protects your fitting from impact, and prevent corrosion

PHILLIPS DRIVER AS STANDARD

Ensure reliability, durability and performance leading to long-lasting LEDs

4000K COLOUR TEMPERATURE

Bright and crisp light best used for industrial spaces

HIGH RACK, WIDE AND NARROW OPTICAL LENS OPTIONS AVAILABLE

Direct your light precisely where you need it, providing maximum efficiency, visibility and safety in any industrial space

4K