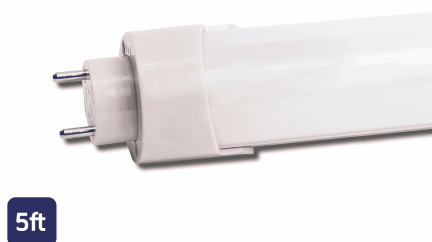


## CARLTON T8 TUBE 5500K 1500MM (5FT) 16W

NET-55-02-04



5ft

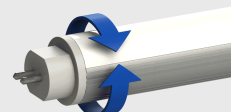
### 3 colour temperatures available

3000K, 4000K and 5500K colour temperatures available for a variety of applications



### Rotatable end caps

Direct the light exactly where it's needed



## Features & Benefits

- Rotatable end caps
- Single colour temperature 5500K

## Key Data

Power	16W
Luminous Flux	2200lm
Colour Temperature	5500K
IP Rating	IP20
Dimensions	1514.2 x 28mm
Warranty	5 Years (Registration Required)

## Compatible Accessories

NET-61-33-01	Foxlux Self Test Emergency Kit 5W
NET-50-33-01	Streamer 3H Emergency Kit 4.5W
NET-19-33-17	Liteplan DALI Emergency Kit 5W
NET-55-16-02	LED Tube Replacement Starter

### NET LED Lighting

Buckingham Business Park, 300 Anderson Road,  
Swavesey, Cambridge, CB24 4UQ

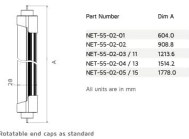
T: 01223 851505 | [sales@netled.co.uk](mailto:sales@netled.co.uk) | [www.netled.co.uk](http://www.netled.co.uk)



**ORDER BY 6PM**  
FOR NEXT DAY DELIVERY

Technical Specifications

Input Voltage (AC)	85-265V
Power Factor	>0.95
Luminaire Efficacy	130lm/W
LED Manufacturer	Sanan
LED Type	SMD 2835
Driver Manufacturer	Wiscoon Tech Co. Ltd
Driver Output Voltage (DC)	50-80V
Total Circuit Power (w)	16W
Electrical Class	2
Colour Rendering	>80 CRI
Lamp Viewing Angle	120°
Dimmable	No
Operating Temp.	-15°C to +45°C
Lifespan LM80	50,000 Hours
UGR Rating	22
Weight	0.42Kg
Manufacturer	Wiscoon Tech Co. Ltd.
Fire Rating	V2
Luminous Flux Factor	25%
Housing Colour	White
Housing Material	Aluminium
Diffuser Material	Polycarbonate



Other Options

Description	
NET-55-02-01	Carlton T8 Tube 5500K 600mm (2ft) 8W
NET-55-02-02	Carlton T8 Tube 5500K 900mm (3ft) 9W
NET-55-02-03	Carlton T8 Tube 5500K 1200mm (4ft) 15W
NET-55-02-13	Carlton T8 Tube 3000K 1500mm (5ft) 16W
NET-55-02-04	Carlton T8 Tube 5500K 1500mm (5ft) 16W
NET-55-02-15	Carlton T8 Tube 3000K 1800mm (6ft) 22W
NET-55-02-05	Carlton T8 Tube 5500K 1800mm (6ft) 22W
NET-55-02-07	Carlton T8 Tube 4000K 1500mm (5ft) 16W
NET-55-02-09	Carlton T8 Tube 4000K 1800mm (6ft) 22W

NET LED Lighting

Buckingham Business Park, 300 Anderson Road,  
Swavesey, Cambridge, CB24 4UQ

T: 01223 851505 | sales@netled.co.uk | www.netled.co.uk



ORDER BY 6PM  
FOR NEXT DAY DELIVERY

**135**  
lm/W

3K

4K

5.5K

**3000K, 4000K AND  
5500K COLOUR  
TEMPERATURES  
AVAILABLE**

Can be used for a variety of  
applications from commercial  
and retail spaces to residential  
environments

4K

5.5K

**4000K AND  
5500K COLOUR  
TEMPERATURES  
AVAILABLE**

Can be used for a variety of  
applications from commercial  
and retail spaces to residential  
environments

T8

T5

**DALI DIMMABLE  
DRIVER  
OPTIONS  
AVAILABLE**

Customise lighting levels  
and reduce electricity  
consumption

*DALI options only*

**ROTATABLE  
END CAPS**

Direct the light exactly  
where it's needed

