

REPLACEMENT TRIDONIC DRIVER FOR 30W NON-DIMMABLE KINGSTON/HINXTON  
NET-45-43-02



**NET LED Lighting**

Buckingway Business Park, 300 Anderson Road,  
Swavesey, Cambridge, CB24 4UQ

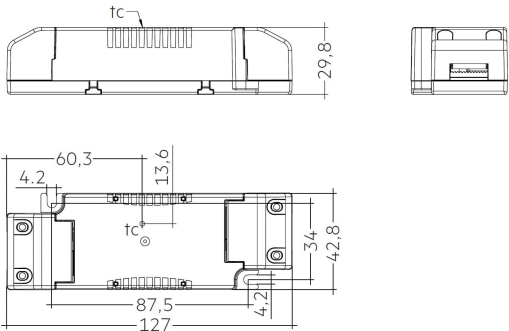
T: 01223 851505 | [sales@netled.co.uk](mailto:sales@netled.co.uk) | [www.netled.co.uk](http://www.netled.co.uk)



**ORDER BY 6PM**  
FOR NEXT DAY DELIVERY

Technical Specifications

Input Voltage (AC)	220-240V
Manufacturer	Tridonic
Housing Material	Polycarbonate



Other Options

Description	
NET-45-43-01	Replacement Tridonic Driver for 20W Non-Dimmable Kingston Panel
NET-45-43-02	Replacement Tridonic Driver for 30W Non-Dimmable Kingston/Hinxton Panels
NET-45-43-03	Replacement Tridonic Driver for 50W Non-Dimmable Kingston/Hinxton Panels

NET LED Lighting  
Buckingham Business Park, 300 Anderson Road,  
Swavesey, Cambridge, CB24 4UQ

T: 01223 851505 | sales@netled.co.uk | www.netled.co.uk

 **ORDER BY 6PM**  
FOR NEXT DAY DELIVERY