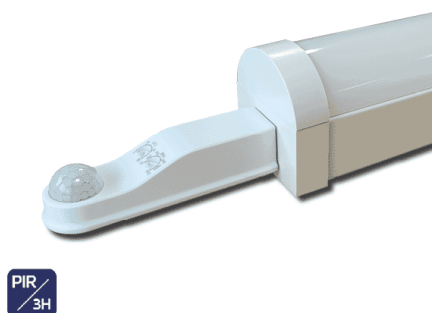


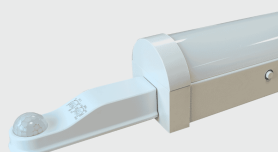
FOXTON BATTEN TRI-COLOUR 1500MM (5FT) 25W PIR SENSOR ON/OFF EMERGENCY

NET-41-11-79



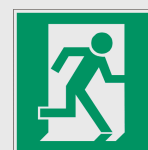
External On/Off PIR Sensor

Save energy costs with a fitting that only comes on when heat signatures are detected



3 Hour Emergency operation

The integral Emergency Battery ensures the fitting stays on in the event of an emergency or power failure



Features & Benefits

- 3H Emergency function
- On/Off PIR Sensor ensures the fitting only comes on when heat signatures are detected
- Selectable colour temperature 3000K, 4000K or 5700K
- Rear or end cable entry
- Tridonic driver as standard
- Push connector for quick and easy installation

Key Data

| | |
|---------------------------|---------------------------------|
| Power | 25W |
| Luminous Flux | 3250lm |
| Colour Temperature | 3000K/4000K/5700K |
| IP Rating | IP20 |
| IK Rating | IK04 |
| Dimensions | 1520 x 63 x 73mm |
| Warranty | 5 Years (Registration Required) |

Compatible Accessories

| | |
|--------------|---|
| NET-46-16-04 | Universal LED NCF / Batten Suspension Kit |
|--------------|---|

NET LED Lighting

Buckingham Business Park, 300 Anderson Road,
Swavesey, Cambridge, CB24 4UQ

T: 01223 851505 | sales@netled.co.uk | www.netled.co.uk



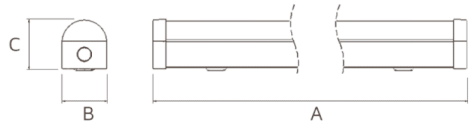
ORDER BY 6PM
FOR NEXT DAY DELIVERY

Technical Specifications

| | |
|----------------------------|------------------------------|
| Input Voltage (AC) | 220-240V |
| Power Factor | >0.90 |
| Luminaire Efficacy | 130lm/W |
| LED Manufacturer | Jingrui |
| LED Type | SMD 2835 |
| No. of LEDs | 264 |
| Driver Manufacturer | Tridonic Advanced Series |
| Driver Output Voltage (DC) | 20-54V |
| Total Circuit Power (W) | 25W |
| Electrical Class | 1 |
| Colour Rendering | >80 CRI |
| Lamp Viewing Angle | 120° |
| Dimmable | No |
| Flicker-Free | Yes |
| Lifespan LM80 | 50,000 Hours |
| UGR Rating | More than 22 |
| Manufacturer | Senselight |
| Fire Rating | V2 |
| Hours Maintained | 3H |
| Lux Levels | <3lux - 2000lux (adjustable) |
| Self Test | No |
| Housing Colour | White |
| Housing Material | Steel |
| Battery Pack | LiFePO4 |
| Detection Angle | 360° |
| Diffuser Material | Polycarbonate |
| Duration | 10s-30min |
| Emergency Kit | 3 Year Warranty |
| Emergency Operation | >3H |

Other Options

| Description | | |
|--------------|------------------|---|
| NET-41-11-83 | Sealite Co. Ltd. | Foxtan Batten Tri-Colour 1500mm (5ft) 25W Standard |
| NET-41-11-84 | IP65 | Foxtan Batten Tri-Colour 1500mm (5ft) 25W Emergency |
| NET-41-12-94 | | Foxtan Batten Tri-Colour 1500mm (5ft) 25W Self Test Emergency |
| NET-41-11-06 | | Foxtan Batten Tri-Colour 1500mm (5ft) 25W Dimmable one4all |
| NET-41-11-07 | | Foxtan Batten Tri-Colour 1500mm (5ft) 25W Dimmable Emergency |
| NET-41-11-77 | | Foxtan Batten Tri-Colour 1500mm (5ft) 25W Dimmable DALI Emergency |
| NET-41-11-78 | | Foxtan Batten Tri-Colour 1500mm (5ft) 25W PIR Sensor On/Off |
| NET-41-11-79 | | Foxtan Batten Tri-Colour 1500mm (5ft) 25W PIR Sensor On/Off Emergency |

| PRODUCT DIMENSIONS | | | |
|--|------|----|----|
|  | | | |
| Size (ft) | A | B | C |
| 2 | 600 | 63 | 73 |
| 4 | 1200 | 63 | 73 |
| 5 | 1500 | 63 | 73 |
| 6 | 1800 | 63 | 73 |

All units are in mm

NET LED Lighting

Buckingham Business Park, 300 Anderson Road,
Swavesey, Cambridge, CB24 4UQ



ORDER BY 6PM
FOR NEXT DAY DELIVERY

T: 01223 851505 | sales@netled.co.uk | www.netled.co.uk

powered by

TRIDONIC

3K

4K

5.7K

SELECTABLE COLOUR TEMPERATURE

Choose your colour temperature
3000K, 4000K or 5700K

COMBINED DIFFUSER AND LEDS

Stop juggling multiple parts
and install a diffuser that comes
with built-in LEDs

PUSH CONNECTOR

Reduce installation time with
easy-to-use push fit terminals

REAR OR END CABLE ENTRY

Create seamless
end-to-end lighting designs

TRIDONIC ADVANCED 2 DRIVER
AS STANDARD